

For Research Use Only

RNF170 Polyclonal antibody

Catalog Number: 21024-1-AP



Basic Information

Catalog Number: 21024-1-AP	GenBank Accession Number: BC032393	Purification Method: Antigen affinity purification
Size: 150ul , Concentration: 200 ug/ml by Nanodrop and 173 ug/ml by Bradford method using BSA as the standard;	GeneID (NCBI): 81790	Recommended Dilutions: WB 1:200-1:1000 IHC 1:20-1:200
Source: Rabbit	UNIPROT ID: Q96K19	
Isotype: IgG	Full Name: ring finger protein 170	
Immunogen Catalog Number: AG15288	Calculated MW: 258 aa, 30 kDa	
	Observed MW: 27 kDa	

Applications

Tested Applications: WB, IHC, ELISA	Positive Controls:
Species Specificity: human	WB : human placenta tissue,
Note-IHC: suggested antigen retrieval with TE buffer pH 9.0; (*) Alternatively, antigen retrieval may be performed with citrate buffer pH 6.0	IHC : human breast cancer tissue, human kidney tissue

Background Information

RNF170 is an E3 ubiquitin ligase that resides in the endoplasmic reticulum (ER) membrane and mediates ubiquitination and processing of inositol 1,4,5-trisphosphate (IP3) receptors by the ER-associated protein degradation (ERAD) pathway. It has 6 isoforms produced by Alternative splicing with the molecular weight of 30 kDa, 27 kDa, 22 kDa, 20 kDa, 19 kDa, and 13 kDa.

Storage

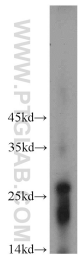
Storage:
Store at -20°C. Stable for one year after shipment.
Storage Buffer:
PBS with 0.02% sodium azide and 50% glycerol pH 7.3.
Aliquoting is unnecessary for -20°C storage

*** 20ul sizes contain 0.1% BSA

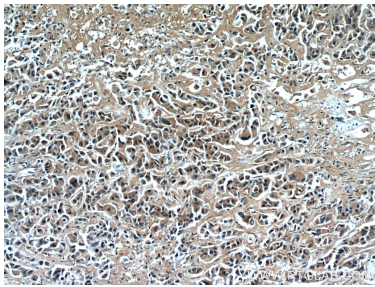
For technical support and original validation data for this product please contact:
T: 1 (888) 4PTGLAB (1-888-478-4522) (toll free in USA), or 1(312) 455-8498 (outside USA)
E: proteintech@ptglab.com
W: ptglab.com

This product is exclusively available under Proteintech Group brand and is not available to purchase from any other manufacturer.

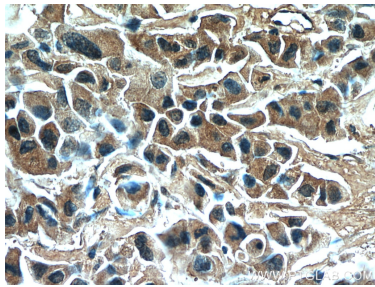
Selected Validation Data



human placenta tissue were subjected to SDS PAGE followed by western blot with 21024-1-AP (RNF170 antibody) at dilution of 1:300 incubated at room temperature for 1.5 hours.



Immunohistochemical analysis of paraffin-embedded human breast cancer using 21024-1-AP (RNF170 antibody) at dilution of 1:50 (under 10x lens).



Immunohistochemical analysis of paraffin-embedded human breast cancer using 21024-1-AP (RNF170 antibody) at dilution of 1:50 (under 40x lens).