

For Research Use Only

ARRDC1 Polyclonal antibody, PBS Only

Catalog Number: 21030-1-PBS



Basic Information

Catalog Number:

21030-1-PBS

Size:

100ug, Concentration: 1 mg/ml by Nanodrop;

Source:

Rabbit

Isotype:

IgG

Immunogen Catalog Number:

AG15341

GenBank Accession Number:

BC032346

GeneID (NCBI):

92714

UNIPROT ID:

Q8N5I2

Full Name:

arrestin domain containing 1

Calculated MW:

433 aa, 46 kDa

Observed MW:

46-50 kDa

Purification Method:

Antigen affinity purification

Applications

Tested Applications:

WB, IHC, Indirect ELISA

Species Specificity:

human, mouse

Background Information

ARRDC1, or Arrestin-Domain Containing Protein 1, is a protein that plays a significant role in the formation and release of extracellular vesicles, specifically a subtype known as ARMMs (Arrestin-Domain Containing Protein 1-mediated microvesicles). ARRDC1 is localized to the cytosolic side of the plasma membrane and recruits the ESCRT-I complex protein TSG101 to initiate outward membrane budding. This protein is also involved in the regulation of protein cargo and release of extracellular vesicles, including both exosomes and ectosomes. The absence of ARRDC1 can lead to changes in the protein cargo within these vesicles, indicating its importance in the sorting and packaging process.

Storage

Storage:

Store at -80°C.

Storage Buffer:

PBS only, pH7.3

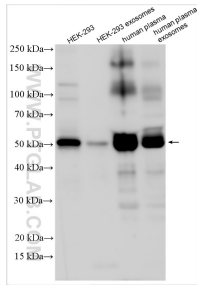
For technical support and original validation data for this product please contact:

T: 1 (888) 4PTGLAB (1-888-478-4522) (toll free in USA), or 1(312) 455-8498 (outside USA)

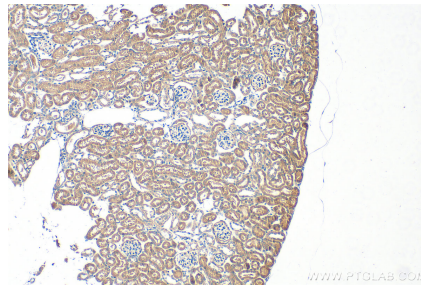
E: proteintech@ptglab.com
W: ptglab.com

This product is exclusively available under Proteintech Group brand and is not available to purchase from any other manufacturer.

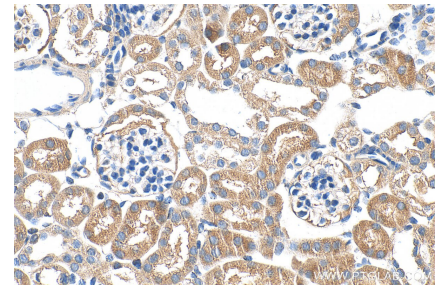
Selected Validation Data



Various lysates were subjected to SDS PAGE followed by western blot with 21030-1-AP (ARRDC1 antibody) at dilution of 1:500 incubated at room temperature for 1.5 hours. This data was developed using the same antibody clone with 21030-1-PBS in a different storage buffer formulation.



Immunohistochemical analysis of paraffin-embedded mouse kidney tissue slide using 21030-1-AP (ARRDC1 antibody) at dilution of 1:200 (under 10x lens). Heat mediated antigen retrieval with Tris-EDTA buffer (pH 9.0). This data was developed using the same antibody clone with 21030-1-PBS in a different storage buffer formulation.



Immunohistochemical analysis of paraffin-embedded mouse kidney tissue slide using 21030-1-AP (ARRDC1 antibody) at dilution of 1:200 (under 40x lens). Heat mediated antigen retrieval with Tris-EDTA buffer (pH 9.0). This data was developed using the same antibody clone with 21030-1-PBS in a different storage buffer formulation.