

For Research Use Only

FSD1L Polyclonal antibody, PBS Only

Catalog Number: 21032-1-PBS



Basic Information

Catalog Number:

21032-1-PBS

Size:

100ug, Concentration: 1 mg/ml by Nanodrop;

Source:

Rabbit

Isotype:

IgG

Immunogen Catalog Number:

AG15345

GenBank Accession Number:

BC036746

GeneID (NCBI):

83856

UNIPROT ID:

Q9BXM9

Full Name:

fibronectin type III and SPRY domain containing 1-like

Calculated MW:

530 aa, 60 kDa

Observed MW:

56-65 kDa

Purification Method:

Antigen affinity purification

Applications

Tested Applications:

IHC, IF/ICC, Indirect ELISA

Species Specificity:

human, mouse

Storage

Storage:

Store at -80°C.

Storage Buffer:

PBS Only

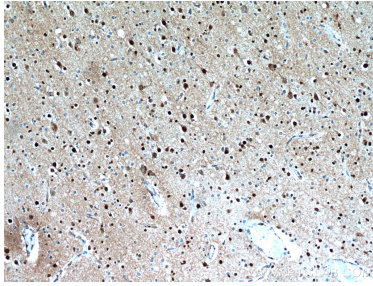
For technical support and original validation data for this product please contact:

T: 1 (888) 4PTGLAB (1-888-478-4522) (toll free in USA), or 1(312) 455-8498 (outside USA)

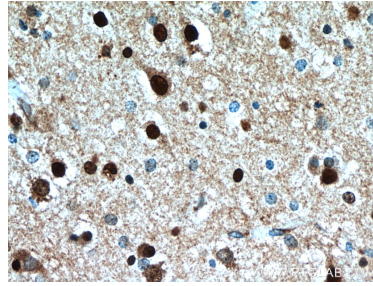
E: proteintech@ptglab.com
W: ptglab.com

This product is exclusively available under Proteintech Group brand and is not available to purchase from any other manufacturer.

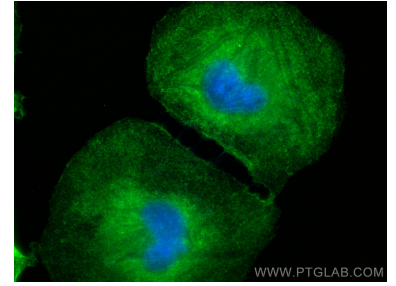
Selected Validation Data



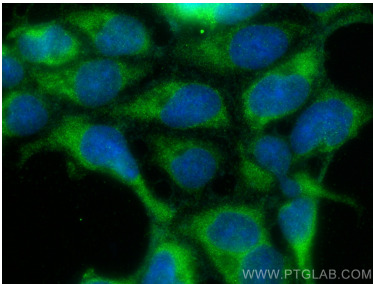
Immunohistochemical analysis of paraffin-embedded human brain using 21032-1-AP (FSD1L antibody) at dilution of 1:50 (under 10x lens). This data was developed using the same antibody clone with 21032-1-PBS in a different storage buffer formulation.



Immunohistochemical analysis of paraffin-embedded human brain using 21032-1-AP (FSD1L antibody) at dilution of 1:50 (under 40x lens). This data was developed using the same antibody clone with 21032-1-PBS in a different storage buffer formulation.



Immunofluorescent analysis of (-20°C Ethanol) fixed HeLa cells using FSD1L antibody (21032-1-AP) at dilution of 1:400 and CoraLite®488-Conjugated Goat Anti-Rabbit IgG(H+L) (SA00013-2). This data was developed using the same antibody clone with 21032-1-PBS in a different storage buffer formulation.



Immunofluorescent analysis of (-20°C Ethanol) fixed HEK-293 cells using FSD1L antibody (21032-1-AP) at dilution of 1:400 and CoraLite®488-Conjugated Goat Anti-Rabbit IgG(H+L) (SA00013-2). This data was developed using the same antibody clone with 21032-1-PBS in a different storage buffer formulation.