

For Research Use Only

FRMD6/Willin Polyclonal antibody, PBS Only

Catalog Number: 21039-1-PBS



Basic Information

Catalog Number: 21039-1-PBS	GenBank Accession Number: BC029870	Purification Method: Antigen affinity purification
Size: 100ug , Concentration: 1 mg/ml by Nanodrop;	GeneID (NCBI): 122786	
Source: Rabbit	UNIPROT ID: Q96NE9	
Isotype: IgG	Full Name: FERM domain containing 6	
Immunogen Catalog Number: AG15375	Calculated MW: 622 aa, 72 kDa	
	Observed MW: 72, 70, 30 kDa	

Applications

Tested Applications:
WB, IHC, FC (Intra), Indirect ELISA

Species Specificity:
human, mouse, rat

Background Information

Willin, also known as FRMD6 or human Expanded (hEx), is a member of the FERM-domain family of cytoskeletal crosslinkers. It is a potent inhibitor of cell proliferation, transformation and modulator of drug sensitivity, suggesting it possesses tumor suppressor properties. Willin is widely expressed in normal tissues. Although willin is found in the cytoplasm and membrane, it localizes to the nuclei of almost all tumors. This antibody was raised against the C-terminal region of human FRMD6 protein and is expected to recognize the endogenous FRMD6.

Storage

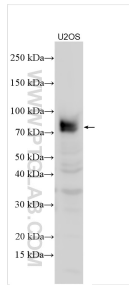
Storage:
Store at -80°C.

Storage Buffer:
PBS only, pH7.3

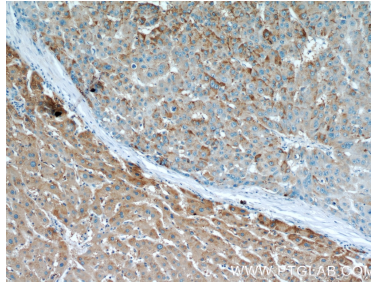
For technical support and original validation data for this product please contact:
T: 1 (888) 4PTGLAB (1-888-478-4522) (toll free in USA), or 1(312) 455-8498 (outside USA) E: proteintech@ptglab.com
W: ptglab.com

This product is exclusively available under Proteintech Group brand and is not available to purchase from any other manufacturer.

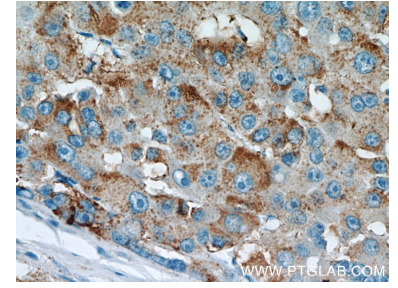
Selected Validation Data



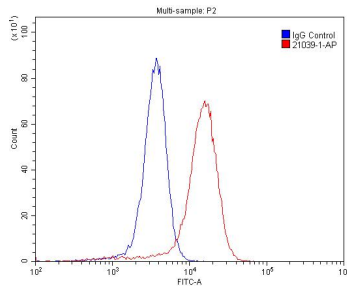
Various lysates were subjected to SDS PAGE followed by western blot with 21039-1-AP (Willin antibody) at dilution of 1:400 incubated at room temperature for 1.5 hours. This data was developed using the same antibody clone with 21039-1-PBS in a different storage buffer formulation.



Immunohistochemical analysis of paraffin-embedded human liver cancer using 21039-1-AP (Willin antibody) at dilution of 1:50 (under 10x lens). This data was developed using the same antibody clone with 21039-1-PBS in a different storage buffer formulation.



Immunohistochemical analysis of paraffin-embedded human liver cancer using 21039-1-AP (Willin antibody) at dilution of 1:50 (under 40x lens). This data was developed using the same antibody clone with 21039-1-PBS in a different storage buffer formulation.



1X10⁶ A431 cells were stained with .2ug Willin antibody (21039-1-AP, red) and control antibody (blue). Fixed with 4% PFA blocked with 3% BSA (30 min). Alexa Fluor 488-conjugated AffiniPure Goat Anti-Mouse IgG(H+L) with dilution 1:1500. This data was developed using the same antibody clone with 21039-1-PBS in a different storage buffer formulation.