

For Research Use Only

ESRP1 Polyclonal antibody

Catalog Number: 21045-1-AP

Featured Product

8 Publications



Basic Information

Catalog Number: 21045-1-AP	GenBank Accession Number: BC099916	Purification Method: Antigen affinity purification
Size: 150ul, Concentration: 450 µg/ml by Nanodrop and 280 µg/ml by Bradford method using BSA as the standard;	GeneID (NCBI): 54845	Recommended Dilutions: WB 1:500-1:2000 IP 0.5-4.0 ug for 1.0-3.0 mg of total protein lysate IHC 1:250-1:1000
Source: Rabbit	Full Name: epithelial splicing regulatory protein 1	
Isotype: IgG	Calculated MW: 681 aa, 76 kDa	
Immunogen Catalog Number: AG15386	Observed MW: 76 kDa	

Applications

Tested Applications: IHC, IP, WB, ELISA	Positive Controls: WB: COLO 320 cells, mouse lung tissue, MCF-7 cells IP: COLO 320 cells, IHC: human lung tissue, mouse colon tissue
Cited Applications: IF, RIP, WB	
Species Specificity: human, mouse	
Cited Species: human	
Note-IHC: suggested antigen retrieval with TE buffer pH 9.0; (*) Alternatively, antigen retrieval may be performed with citrate buffer pH 6.0	

Background Information

ESRP1, also named as Epithelial splicing regulatory protein 1, is a 681 amino acid protein, which belongs to the ESRP family. ESRP1 as a mRNA splicing factor that regulates the formation of epithelial cell-specific isoforms. ESRP1 specifically regulates the expression of FGFR2-IIIb, an epithelial cell-specific isoform of FGFR2 and also regulates the splicing of CD44, CTNND1, ENAH, 3 transcripts that undergo changes in splicing during the epithelial-to-mesenchymal transition (EMT). ESRP1 exists various isoforms and molecular weight of each isoform is 76 kDa, 67 kDa, and 73 kDa.

Notable Publications

Author	Pubmed ID	Journal	Application
Wei Zhao	31570856	Cell Death Differ	WB
Christina R Adams	31134896	Elife	WB
Shuo Chen	33483472	Cell Death Discov	WB

Storage

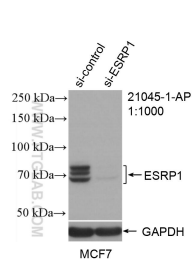
Storage:
Store at -20°C. Stable for one year after shipment.
Storage Buffer:
PBS with 0.02% sodium azide and 50% glycerol pH 7.3.
Aliquoting is unnecessary for -20°C storage

*** 20ul sizes contain 0.1% BSA

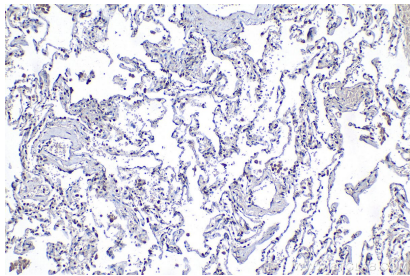
For technical support and original validation data for this product please contact:
T: 1 (888) 4PTGLAB (1-888-478-4522) (toll free in USA), or 1(312) 455-8498 (outside USA)
E: proteintech@ptglab.com
W: ptglab.com

This product is exclusively available under Proteintech Group brand and is not available to purchase from any other manufacturer.

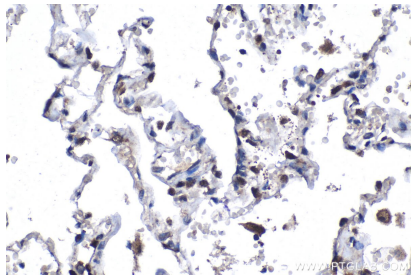
Selected Validation Data



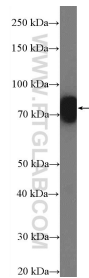
WB result of ESRP1 antibody (21045-1-AP; 1:1000; incubated at room temperature for 1.5 hours) with sh-Control and sh-ESRP1 transfected MCF-7 cells.



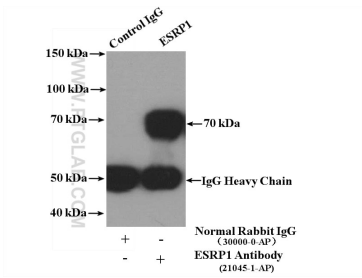
Immunohistochemical analysis of paraffin-embedded human lung tissue slide using 21045-1-AP (ESRP1 antibody) at dilution of 1:500 (under 10x lens). Heat mediated antigen retrieval with Tris-EDTA buffer (pH 9.0).



Immunohistochemical analysis of paraffin-embedded human lung tissue slide using 21045-1-AP (ESRP1 antibody) at dilution of 1:500 (under 40x lens). Heat mediated antigen retrieval with Tris-EDTA buffer (pH 9.0).



COLO 320 cells were subjected to SDS PAGE followed by western blot with 21045-1-AP (ESRP1 Antibody) at dilution of 1:1000 incubated at room temperature for 1.5 hours.



IP Result of anti-ESRP1 (IP:21045-1-AP, 4ug; Detection:21045-1-AP 1:300) with COLO 320 cells lysate 4000ug.