

For Research Use Only

# MLKL Polyclonal antibody

Catalog Number: 21066-1-AP

Featured Product

63 Publications



## Basic Information

<b>Catalog Number:</b> 21066-1-AP	<b>GenBank Accession Number:</b> BC028141	<b>Purification Method:</b> Antigen affinity purification
<b>Size:</b> 150ul, Concentration: 450 ug/ml by Nanodrop and 353 ug/ml by Bradford method using BSA as the standard;	<b>GeneID (NCBI):</b> 197259	<b>Recommended Dilutions:</b> WB 1:500-1:3000 IHC 1:50-1:500 IF/ICC 1:50-1:500
<b>Source:</b> Rabbit	<b>UNIPROT ID:</b> Q8NB16	
<b>Isotype:</b> IgG	<b>Full Name:</b> mixed lineage kinase domain-like	
<b>Immunogen Catalog Number:</b> AG15188	<b>Calculated MW:</b> 471 aa, 54 kDa	
	<b>Observed MW:</b> 54 kDa	

## Applications

<b>Tested Applications:</b> WB, IHC, IF/ICC, ELISA	<b>Positive Controls:</b> WB : HT-29 cells, HepG2 cells
<b>Cited Applications:</b> WB, IHC, IF, IP	<b>IHC :</b> human liver cancer tissue, human kidney tissue
<b>Species Specificity:</b> human	<b>IF/ICC :</b> HepG2 cells,
<b>Cited Species:</b> human, rat, pig	

**Note-IHC: suggested antigen retrieval with TE buffer pH 9.0; (\*) Alternatively, antigen retrieval may be performed with citrate buffer pH 6.0**

## Background Information

Mixed lineage kinase domain like pseudokinase (MLKL), belongs to the protein kinase superfamily, has two MW of 54 and 30 kDa. MLKL plays a critical role in tumor necrosis factor (TNF)-induced necroptosis, a programmed cell death process, via interaction with receptor-interacting protein 3 (RIP3), which is a key signaling molecule in necroptosis pathway. High levels of this protein and RIP3 are associated with inflammatory bowel disease in children.

## Notable Publications

Author	Pubmed ID	Journal	Application
Qing-Song Lin	31506635	Lab Invest	WB
Yueyang Wang	34480665	Biol Trace Elem Res	WB
Muhammad Khan	36389725	Front Immunol	IHC

## Storage

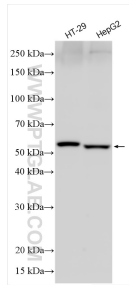
**Storage:**  
Store at -20°C. Stable for one year after shipment.  
**Storage Buffer:**  
PBS with 0.02% sodium azide and 50% glycerol pH 7.3.  
Aliquoting is unnecessary for -20°C storage

\*\*\* 20ul sizes contain 0.1% BSA

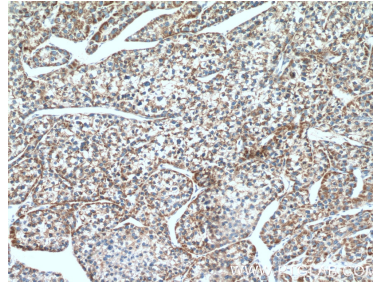
For technical support and original validation data for this product please contact:  
T: 1 (888) 4PTGLAB (1-888-478-4522) (toll free in USA), or 1(312) 455-8498 (outside USA)  
E: proteintech@ptglab.com  
W: ptglab.com

This product is exclusively available under Proteintech Group brand and is not available to purchase from any other manufacturer.

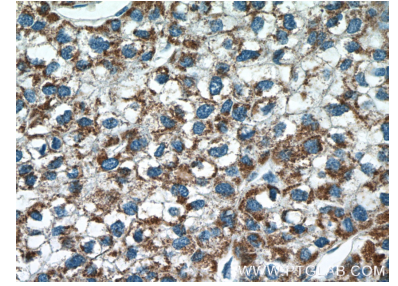
## Selected Validation Data



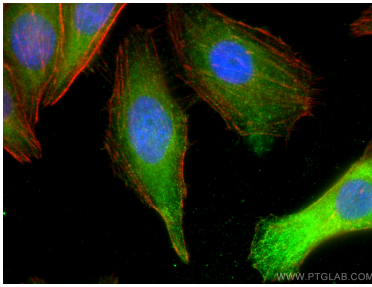
Various lysates were subjected to SDS PAGE followed by western blot with 21066-1-AP (MLKL antibody) at dilution of 1:1500 incubated at room temperature for 1.5 hours.



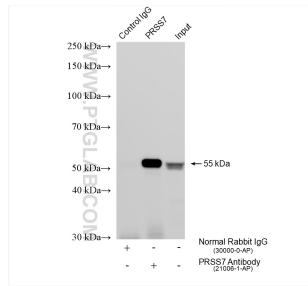
Immunohistochemical analysis of paraffin-embedded human liver cancer tissue slide using 21066-1-AP (MLKL antibody) at dilution of 1:200 (under 10x lens).



Immunohistochemical analysis of paraffin-embedded human liver cancer tissue slide using 21066-1-AP (MLKL antibody) at dilution of 1:200 (under 40x lens).



Immunofluorescent analysis of (-20°C Ethanol) fixed HepG2 cells using MLKL antibody (21066-1-AP) at dilution of 1:200 and CoraLite@488-Conjugated Goat Anti-Rabbit IgG(H+L), CL594-Phalloidin (red).



IP result of anti-MLKL (IP:21066-1-AP, 4ug; Detection:21066-1-AP 1:1000) with HepG2 cells lysate 1470 ug.