

For Research Use Only

# SIM2 Polyclonal antibody

Catalog Number: 21069-1-AP

1 Publications



## Basic Information

<b>Catalog Number:</b> 21069-1-AP	<b>GenBank Accession Number:</b> BC110444	<b>Purification Method:</b> Antigen affinity purification
<b>Size:</b> 150ul , Concentration: 450 µg/ml by Nanodrop;	<b>GeneID (NCBI):</b> 6493	<b>Recommended Dilutions:</b> WB 1:500-1:3000 IP 0.5-4.0 ug for 1.0-3.0 mg of total protein lysate
<b>Source:</b> Rabbit	<b>Full Name:</b> single-minded homolog 2 (Drosophila)	
<b>IsoType:</b> IgG	<b>Calculated MW:</b> 667 aa, 73 kDa	
<b>Immunogen Catalog Number:</b> AG15204	<b>Observed MW:</b> 60-64 kDa	

## Applications

<b>Tested Applications:</b> IP, WB, ELISA	<b>Positive Controls:</b>
<b>Cited Applications:</b> ChIP	<b>WB:</b> COLO 320 cells, human skeletal muscle tissue, HeLa cells, HepG2 cells, U-251 cells
<b>Species Specificity:</b> human, mouse	<b>IP:</b> mouse skeletal muscle tissue,
<b>Cited Species:</b> human	

## Background Information

SIM2, also named as single-minded homolog 2, is a 667 amino acid protein, which contains 1 bHLH (basic helix-loop-helix) domain and one PAS-associated C-terminal domain. SIM2 localizes in the nucleus and has two isoforms. Isoform SIM2 is a 73 kDa protein and Isoform SIM2S is 63 kDa protein. SIM2 as a transcription factor may be a master gene of CNS development in cooperation with Arnt. It may have pleiotropic effects in the tissues expressed during development.

## Notable Publications

Author	Pubmed ID	Journal	Application
Emily Lyn Button	35730699	Biochem J	ChIP

## Storage

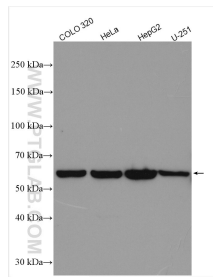
**Storage:**  
Store at -20°C. Stable for one year after shipment.  
**Storage Buffer:**  
PBS with 0.02% sodium azide and 50% glycerol pH 7.3.  
**Aliquoting is unnecessary for -20°C storage**

\*\*\* 20ul sizes contain 0.1% BSA

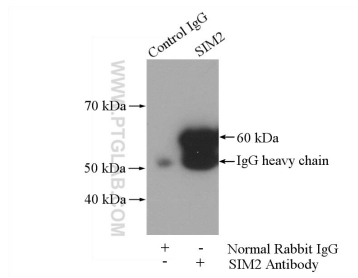
For technical support and original validation data for this product please contact:  
T: 1 (888) 4PTGLAB (1-888-478-4522) (toll free in USA), or 1(312) 455-8498 (outside USA)  
E: proteintech@ptglab.com  
W: ptglab.com

This product is exclusively available under Proteintech Group brand and is not available to purchase from any other manufacturer.

## Selected Validation Data



Various lysates were subjected to SDS PAGE followed by western blot with 21069-1-AP (SIM2 antibody) at dilution of 1:1500 incubated at room temperature for 1.5 hours.



IP Result of anti-SIM2 (IP:21069-1-AP, 4ug; Detection:21069-1-AP 1:800) with mouse skeletal muscle tissue lysate 2200ug.