

For Research Use Only

ELOF1 Polyclonal antibody

Catalog Number: 21070-1-AP



Basic Information

Catalog Number:

21070-1-AP

Size:

150ul, Concentration: 450 ug/ml by Nanodrop;

Source:

Rabbit

Isotype:

IgG

Immunogen Catalog Number:

AG15213

GenBank Accession Number:

BC007516

GeneID (NCBI):

84337

UNIPROT ID:

P60002

Full Name:

elongation factor 1 homolog (S. cerevisiae)

Calculated MW:

9.5 kDa

Observed MW:

9 kDa

Purification Method:

Antigen affinity purification

Recommended Dilutions:

WB 1:500-1:1000

Applications

Tested Applications:

WB, ELISA

Species Specificity:

human, mouse, rat

Positive Controls:

WB : mouse testis tissue, HEK-293 cells, rat testis tissue

Background Information

ELOF1 (elongation factor 1 homologue) is a small (83 aa), evolutionarily conserved, RNAPII-associated transcription elongation factor that is also a core component of the transcription-coupled DNA repair machinery with an additional role in preventing DNA damage during DNA replication (PMID: 34108663). Loss of ELOF1 strongly compromises AID-mediated deamination, SHM, and CSR, and that this is accompanied by a decrease in parameters of RNAPII pausing/stalling and in RNAPII RNA synthesis without a decrease in levels of S2P-RNAPII (PMID: 39386505).

Storage

Storage:

Store at -20°C. Stable for one year after shipment.

Storage Buffer:

PBS with 0.02% sodium azide and 50% glycerol pH 7.3.

Aliquoting is unnecessary for -20°C storage

*** 20ul sizes contain 0.1% BSA

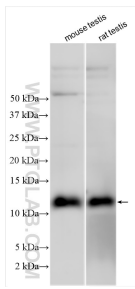
For technical support and original validation data for this product please contact:

T: 1 (888) 4PTGLAB (1-888-478-4522) (toll free in USA), or 1(312) 455-8498 (outside USA)

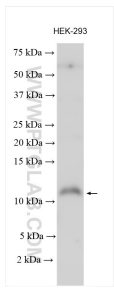
E: proteintech@ptglab.com
W: ptglab.com

This product is exclusively available under Proteintech Group brand and is not available to purchase from any other manufacturer.

Selected Validation Data



Various lysates were subjected to SDS PAGE followed by western blot with 21070-1-AP (ELOF1 antibody) at dilution of 1:800 incubated at room temperature for 1.5 hours.



Various lysates were subjected to SDS PAGE followed by western blot with 21070-1-AP (ELOF1 antibody) at dilution of 1:600 incubated at room temperature for 1.5 hours.