

For Research Use Only

CNN2 Polyclonal antibody

Catalog Number: 21073-1-AP

Featured Product

6 Publications



Basic Information

Catalog Number:

21073-1-AP

Size:

150ul, Concentration: 450 ug/ml by Nanodrop and 307 ug/ml by Bradford method using BSA as the standard;

Source:

Rabbit

Isotype:

IgG

Immunogen Catalog Number:

AG15225

GenBank Accession Number:

BC141818

GeneID (NCBI):

1265

UNIPROT ID:

Q99439

Full Name:

calponin 2

Calculated MW:

309 aa, 34 kDa

Observed MW:

34-36 kDa

Purification Method:

Antigen affinity purification

Recommended Dilutions:

WB 1:2000-1:10000

IHC 1:20-1:200

IF/ICC 1:50-1:500

Applications

Tested Applications:

WB, IHC, IF/ICC, ELISA

Cited Applications:

WB, IHC, IF

Species Specificity:

human, mouse, rat

Cited Species:

human, mouse, rat

Note-IHC: suggested antigen retrieval with TE buffer pH 9.0; (*) Alternatively, antigen retrieval may be performed with citrate buffer pH 6.0

Positive Controls:

WB : HeLa cells, HepG2 cells

IHC : human heart tissue, human hysteromyoma tissue

IF/ICC : HepG2 cells,

Background Information

Calponin is a family of actin filament-associated proteins which regulate smooth muscle cell contraction. Three isoforms of calponin exist: calponin h1 (CNN1), calponin h2 (CNN2) and calponin 3 (CNN3). Calponin 1 and calponin 2 are predominately expressed in smooth muscle cells and cardiac muscle cells, respectively. Calponin 3 is highly expressed in many tissues including articular cartilage and brain.

Notable Publications

Author	Pubmed ID	Journal	Application
Felipe Paredes	31656131	Circ Res	IF
Shu-Jie Wu	33815099	Front Pharmacol	WB
Holly Holliday	33554073	iScience	IHC, WB

Storage

Storage:

Store at -20°C. Stable for one year after shipment.

Storage Buffer:

PBS with 0.02% sodium azide and 50% glycerol pH 7.3.

Aliquoting is unnecessary for -20°C storage

*** 20ul sizes contain 0.1% BSA

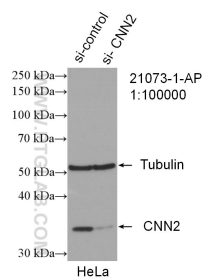
For technical support and original validation data for this product please contact:

T: 1 (888) 4PTGLAB (1-888-478-4522) (toll free in USA), or 1(312) 455-8498 (outside USA)

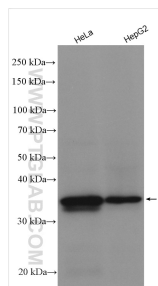
E: proteintech@ptglab.com
W: ptglab.com

This product is exclusively available under Proteintech Group brand and is not available to purchase from any other manufacturer.

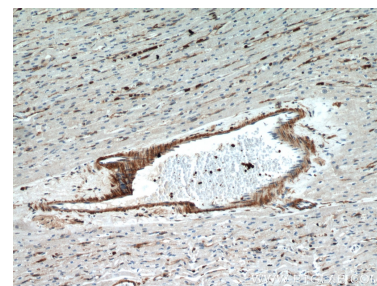
Selected Validation Data



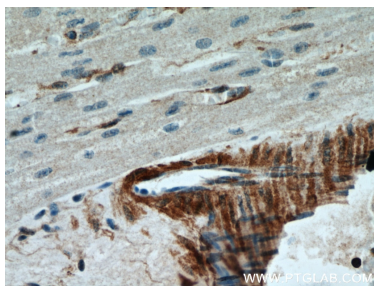
WB result of CNN2 antibody (21073-1-AP; 1:100000; incubated at room temperature for 1.5 hours) with sh-Control and sh-CNN2 transfected HeLa cells.



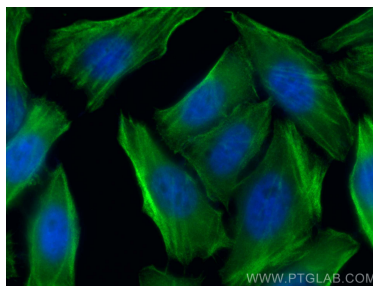
Various lysates were subjected to SDS PAGE followed by western blot with 21073-1-AP (CNN2 antibody) at dilution of 1:5000 incubated at room temperature for 1.5 hours.



Immunohistochemical analysis of paraffin-embedded human heart using 21073-1-AP (CNN2 antibody) at dilution of 1:50 (under 10x lens).



Immunohistochemical analysis of paraffin-embedded human heart using 21073-1-AP (CNN2 antibody) at dilution of 1:50 (under 40x lens).



Immunofluorescent analysis of (-20°C Methanol) fixed HepG2 cells using CNN2 antibody (21073-1-AP) at dilution of 1:200 and CoraLite®488-Conjugated Goat Anti-Rabbit IgG(H+L).