

For Research Use Only

# C1orf107 Polyclonal antibody

Catalog Number: 21076-1-AP



## Basic Information

<b>Catalog Number:</b> 21076-1-AP	<b>GenBank Accession Number:</b> BC022964	<b>Purification Method:</b> Antigen affinity purification
<b>Size:</b> 150ul , Concentration: 500 µg/ml by Nanodrop and 387 µg/ml by Bradford method using BSA as the standard;	<b>GeneID (NCBI):</b> 27042	<b>Recommended Dilutions:</b> WB 1:200-1:1000 IP 0.5-4.0 ug for IP and 1:200-1:1000 for WB
<b>Source:</b> Rabbit	<b>Full Name:</b> chromosome 1 open reading frame 107	
<b>Isotype:</b> IgG	<b>Calculated MW:</b> 756 aa, 87 kDa	
<b>Immunogen Catalog Number:</b> AG15250	<b>Observed MW:</b> 87-100 kDa	

## Applications

<b>Tested Applications:</b> IP, WB, ELISA	<b>Positive Controls:</b>
<b>Species Specificity:</b> human	<b>WB :</b> HepG2 cells, <b>IP :</b> HepG2 cells,

## Background Information

### Storage

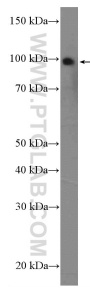
**Storage:**  
Store at -20°C. Stable for one year after shipment.  
**Storage Buffer:**  
PBS with 0.02% sodium azide and 50% glycerol pH 7.3.  
Aliquoting is unnecessary for -20°C storage

\*\*\* 20ul sizes contain 0.1% BSA

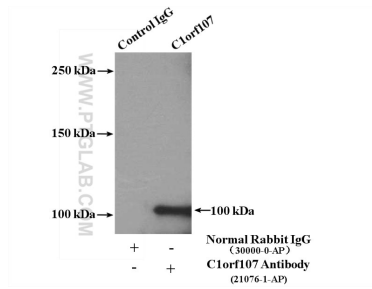
For technical support and original validation data for this product please contact:  
T: 1 (888) 4PTGLAB (1-888-478-4522) (toll free in USA), or 1(312) 455-8498 (outside USA)  
E: proteintech@ptglab.com  
W: ptglab.com

This product is exclusively available under Proteintech Group brand and is not available to purchase from any other manufacturer.

## Selected Validation Data



HepG2 cells were subjected to SDS PAGE followed by western blot with 21076-1-AP (C1orf107 Antibody) at dilution of 1:300 incubated at room temperature for 1.5 hours.



IP Result of anti-C1orf107 (IP:21076-1-AP, 4ug; Detection:21076-1-AP 1:300) with HepG2 cells lysate 1000ug.