

For Research Use Only

GPRC5D Polyclonal antibody

Catalog Number: 21089-1-AP



Basic Information

Catalog Number:

21089-1-AP

Size:

150ul , Concentration: 200 ug/ml by Nanodrop and 200 ug/ml by Bradford method using BSA as the standard;

Source:

Rabbit

Isotype:

IgG

Immunogen Catalog Number:

AG15338

GenBank Accession Number:

BC069341

GeneID (NCBI):

55507

UNIPROT ID:

Q9NZD1

Full Name:

G protein-coupled receptor, family C, group 5, member D

Calculated MW:

345 aa, 39 kDa

Observed MW:

34-39 kDa

Purification Method:

Antigen affinity purification

Recommended Dilutions:

WB 1:500-1:1000

IHC 1:50-1:500

Applications

Tested Applications:

WB, IHC, ELISA

Species Specificity:

human

Note-IHC: suggested antigen retrieval with *TE buffer pH 9.0*; (*) Alternatively, antigen retrieval may be performed with *citrate buffer pH 6.0*

Positive Controls:

WB : Jurkat cells, THP-1 cells

IHC : human kidney tissue,

Storage

Storage:

Store at -20°C. Stable for one year after shipment.

Storage Buffer:

PBS with 0.02% sodium azide and 50% glycerol pH 7.3.

Aliquoting is unnecessary for -20°C storage

*** 20ul sizes contain 0.1% BSA

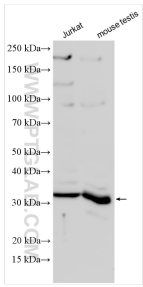
For technical support and original validation data for this product please contact:

T: 1 (888) 4PTGLAB (1-888-478-4522) (toll free in USA), or 1(312) 455-8498 (outside USA)

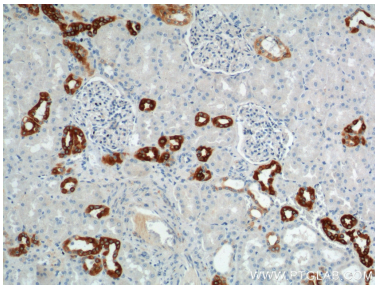
E: proteintech@ptglab.com
W: ptglab.com

This product is exclusively available under Proteintech Group brand and is not available to purchase from any other manufacturer.

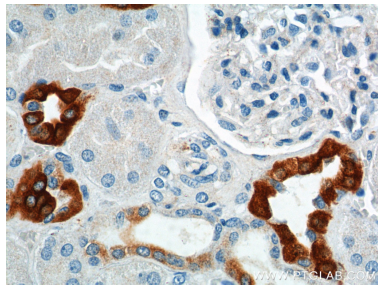
Selected Validation Data



Various lysates were subjected to SDS PAGE followed by western blot with 21089-1-AP (GPRC5D antibody) at dilution of 1:800 incubated at room temperature for 1.5 hours.



Immunohistochemical analysis of paraffin-embedded human kidney tissue slide using 21089-1-AP (GPRC5D Antibody) at dilution of 1:100 (under 10x lens).



Immunohistochemical analysis of paraffin-embedded human kidney tissue slide using 21089-1-AP (GPRC5D Antibody) at dilution of 1:100 (under 40x lens).