

For Research Use Only

# CHCHD4 Polyclonal antibody

Catalog Number: 21090-1-AP

Featured Product

27 Publications



## Basic Information

### Catalog Number:

21090-1-AP

### Size:

150ul, Concentration: 650 ug/ml by Nanodrop and 267 ug/ml by Bradford method using BSA as the standard;

### Source:

Rabbit

### Isotype:

IgG

### Immunogen Catalog Number:

AG15339

### GenBank Accession Number:

BC033775

### GeneID (NCBI):

131474

### UNIPROT ID:

Q8N4Q1

### Full Name:

coiled-coil-helix-coiled-coil-helix domain containing 4

### Calculated MW:

142 aa, 16 kDa

### Observed MW:

22 kDa

### Purification Method:

Antigen affinity purification

### Recommended Dilutions:

WB 1:1000-1:4000

IP 0.5-4.0 ug for 1.0-3.0 mg of total protein lysate

IHC 1:50-1:500

IF/ICC 1:50-1:500

## Applications

### Tested Applications:

WB, IHC, IF/ICC, IP, ELISA

### Cited Applications:

WB, IHC, IF, IP, CoIP

### Species Specificity:

human, mouse, rat

### Cited Species:

human, mouse, rat

**Note-IHC: suggested antigen retrieval with TE buffer pH 9.0; (\*) Alternatively, antigen retrieval may be performed with citrate buffer pH 6.0**

### Positive Controls:

**WB:** Daudi cells, human heart tissue, mouse lung tissue, mouse spleen tissue, LO2 cells, mouse kidney tissue, Ramos cells, Raji cells, rat brain tissue, mouse brain tissue

**IP:** mouse brain tissue,

**IHC:** mouse testis tissue, human kidney tissue

**IF/ICC:** A431 cells,

## Background Information

CHCHD4, a component of human mitochondria, belongs to a protein family. It functions as chaperone and catalyzes the formation of disulfide bonds in substrate proteins, such as COX17. It is required for the import and folding of small cysteine-containing proteins (small Tim) in the mitochondrial intermembrane space (IMS).

## Notable Publications

Author	Pubmed ID	Journal	Application
Kenza Nedara	36387192	Front Oncol	WB
Siddhesh Aras	25315652	Mitochondrion	WB
Tibor Balogh	26584568	Pathol Oncol Res	WB

## Storage

### Storage:

Store at -20°C. Stable for one year after shipment.

### Storage Buffer:

PBS with 0.02% sodium azide and 50% glycerol pH 7.3.

Aliquoting is unnecessary for -20°C storage

\*\*\* 20ul sizes contain 0.1% BSA

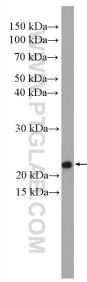
For technical support and original validation data for this product please contact:

T: 1 (888) 4PTGLAB (1-888-478-4522) (toll free in USA), or 1(312) 455-8498 (outside USA)

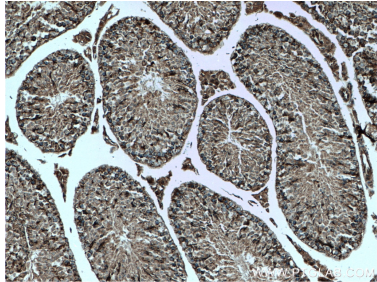
E: [proteintech@ptglab.com](mailto:proteintech@ptglab.com)  
W: [ptglab.com](http://ptglab.com)

This product is exclusively available under Proteintech Group brand and is not available to purchase from any other manufacturer.

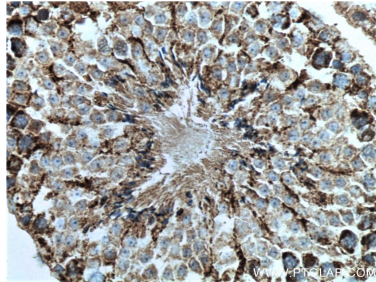
Selected Validation Data



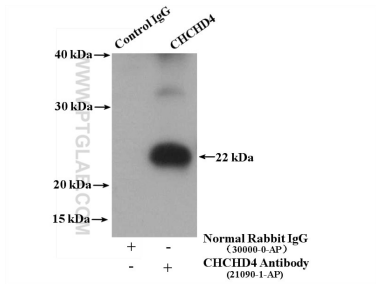
Daudi cells were subjected to SDS PAGE followed by western blot with 21090-1-AP (CHCHD4 antibody) at dilution of 1:2000 incubated at room temperature for 1.5 hours.



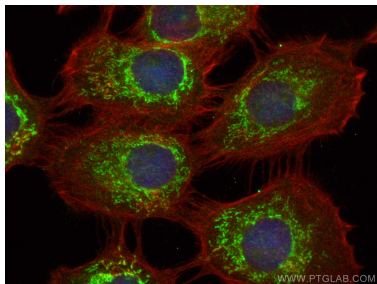
Immunohistochemical analysis of paraffin-embedded mouse testis tissue slide using 21090-1-AP (CHCHD4 antibody) at dilution of 1:200 (under 10x lens. Heat mediated antigen retrieval with Tris-EDTA buffer (pH 9.0).



Immunohistochemical analysis of paraffin-embedded mouse testis tissue slide using 21090-1-AP (CHCHD4 antibody) at dilution of 1:200 (under 40x lens. Heat mediated antigen retrieval with Tris-EDTA buffer (pH 9.0).



IP result of anti-CHCHD4 (IP:21090-1-AP, 4ug; Detection:21090-1-AP 1:1000) with mouse brain tissue lysate 3200 ug.



Immunofluorescent analysis of (4% PFA) fixed A431 cells using CHCHD4 antibody (21090-1-AP) at dilution of 1:200 and CoraLite®488-Conjugated Goat Anti-Rabbit IgG(H+L), CL594-Phalloidin (red).