

For Research Use Only

# AFAP1 Polyclonal antibody

Catalog Number: 21093-1-AP

Featured Product

7 Publications



## Basic Information

<b>Catalog Number:</b> 21093-1-AP	<b>GenBank Accession Number:</b> BC032777	<b>Purification Method:</b> Antigen affinity purification
<b>Size:</b> 150ul, Concentration: 600 µg/ml by Nanodrop and 333 µg/ml by Bradford method using BSA as the standard;	<b>GeneID (NCBI):</b> 60312	<b>Recommended Dilutions:</b> WB 1:500-1:2000 IHC 1:50-1:500 IF 1:10-1:100
<b>Source:</b> Rabbit	<b>Full Name:</b> actin filament associated protein 1	
<b>Isotype:</b> IgG	<b>Calculated MW:</b> 730 aa, 81 kDa	
<b>Immunogen Catalog Number:</b> AG15346	<b>Observed MW:</b> 110 kDa	

## Applications

### Tested Applications:

IF, IHC, WB, ELISA

### Cited Applications:

IF, WB

### Species Specificity:

human, mouse, rat

### Cited Species:

human, rat

**Note-IHC: suggested antigen retrieval with TE buffer pH 9.0; (\*) Alternatively, antigen retrieval may be performed with citrate buffer pH 6.0**

### Positive Controls:

WB : DU 145 cells, mouse brain tissue, rat brain tissue, HeLa cells, MCF-7 cells, PC-3 cells

IHC : human brain tissue,

IF : MCF-7 cells,

## Background Information

Actin filament-associated protein 1 is a protein that in humans is encoded by the AFAP1 gene. The protein encoded by this gene is a Src binding partner. It may represent a potential modulator of actin filament integrity in response to cellular signals, and may function as an adaptor protein by linking Src family members and/or other signaling proteins to actin filaments.

## Notable Publications

Author	Pubmed ID	Journal	Application
Yanbing Zhao	32323742	Int J Mol Med	WB
Xu Han	27578191	Biol Res	WB
Deyao Shi	31443665	J Exp Clin Cancer Res	WB

## Storage

### Storage:

Store at -20°C. Stable for one year after shipment.

### Storage Buffer:

PBS with 0.02% sodium azide and 50% glycerol pH 7.3.

Aliquoting is unnecessary for -20°C storage

\*\*\* 20ul sizes contain 0.1% BSA

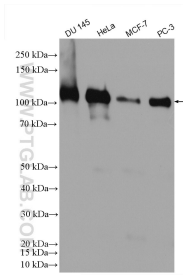
For technical support and original validation data for this product please contact:

T: 1 (888) 4PTGLAB (1-888-478-4522) (toll free in USA), or 1(312) 455-8498 (outside USA)

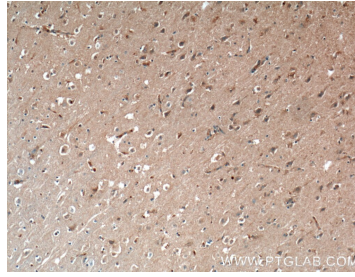
E: proteintech@ptglab.com  
W: ptglab.com

This product is exclusively available under Proteintech Group brand and is not available to purchase from any other manufacturer.

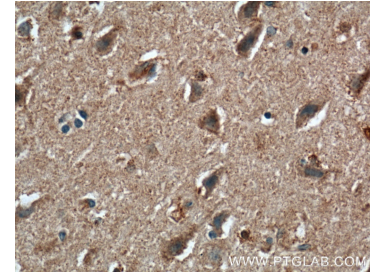
## Selected Validation Data



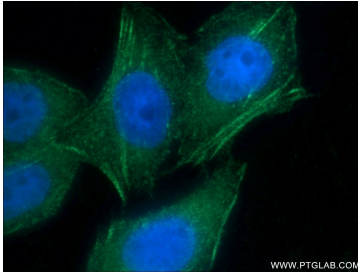
Various lysates were subjected to SDS PAGE followed by western blot with 21093-1-AP (AFAP1 antibody) at dilution of 1:1000 incubated at room temperature for 1.5 hours.



Immunohistochemical analysis of paraffin-embedded human brain tissue slide using 21093-1-AP (AFAP1 Antibody) at dilution of 1:500 (under 10x lens). Heat mediated antigen retrieval with Tris-EDTA buffer (pH 9.0).



Immunohistochemical analysis of paraffin-embedded human brain tissue slide using 21093-1-AP (AFAP1 Antibody) at dilution of 1:500 (under 40x lens). Heat mediated antigen retrieval with Tris-EDTA buffer (pH 9.0).



Immunofluorescent analysis of MCF-7 cells using 21093-1-AP (AFAP1 antibody) at dilution of 1:25 and Alexa Fluor 488-conjugated AffiniPure Goat Anti-Rabbit IgG(H+L).