

For Research Use Only

# PRAS40 Polyclonal antibody

Catalog Number: 21097-1-AP

Featured Product

3 Publications



## Basic Information

### Catalog Number:

21097-1-AP

### Size:

150ul, Concentration: 813 ug/ml by Bradford method using BSA as the standard;

### Source:

Rabbit

### Isotype:

IgG

### Immunogen Catalog Number:

AG15355

### GenBank Accession Number:

BC051844

### GeneID (NCBI):

84335

### UNIPROT ID:

Q96B36

### Full Name:

AKT1 substrate 1 (proline-rich)

### Calculated MW:

27 kDa

### Observed MW:

40 kDa

### Purification Method:

Antigen affinity purification

### Recommended Dilutions:

WB 1:500-1:2000

IHC 1:50-1:500

IF/ICC 1:50-1:500

## Applications

### Tested Applications:

WB, IHC, IF/ICC, ELISA

### Cited Applications:

WB, IF

### Species Specificity:

human

### Cited Species:

human, mouse

**Note-IHC: suggested antigen retrieval with TE buffer pH 9.0; (\*) Alternatively, antigen retrieval may be performed with citrate buffer pH 6.0**

### Positive Controls:

WB : MCF-7 cells, HeLa cells

IHC : human liver tissue,

IF/ICC : HeLa cells,

## Notable Publications

Author	Pubmed ID	Journal	Application
Gang Chen	33489877	Front Oncol	WB
Xiaoxue Jiang	39261456	Nat Commun	WB,IF
Yun Li	37653491	J Neuroinflammation	WB

## Storage

### Storage:

Store at -20°C. Stable for one year after shipment.

### Storage Buffer:

PBS with 0.02% sodium azide and 50% glycerol pH 7.3.

Aliquoting is unnecessary for -20°C storage

\*\*\* 20ul sizes contain 0.1% BSA

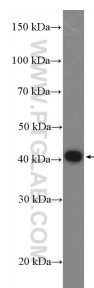
For technical support and original validation data for this product please contact:

T: 1 (888) 4PTGLAB (1-888-478-4522) (toll free in USA), or 1(312) 455-8498 (outside USA)

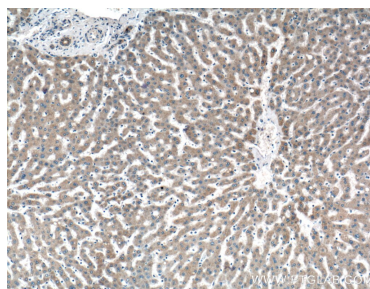
E: [proteintech@ptglab.com](mailto:proteintech@ptglab.com)  
W: [ptglab.com](http://ptglab.com)

This product is exclusively available under Proteintech Group brand and is not available to purchase from any other manufacturer.

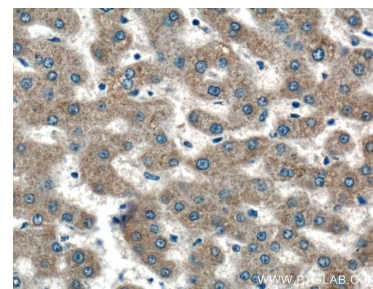
## Selected Validation Data



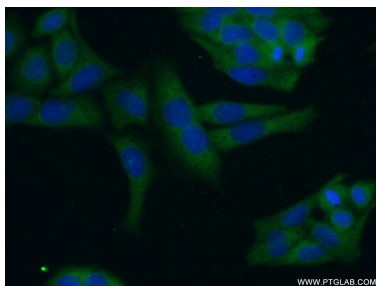
MCF-7 cells were subjected to SDS PAGE followed by western blot with 21097-1-AP (PRAS40 Antibody) at dilution of 1:1000 incubated at room temperature for 1.5 hours.



Immunohistochemical analysis of paraffin-embedded human liver tissue slide using 21097-1-AP (PRAS40 antibody) at dilution of 1:200 (under 10x lens).



Immunohistochemical analysis of paraffin-embedded human liver tissue slide using 21097-1-AP (PRAS40 antibody) at dilution of 1:200 (under 40x lens).



Immunofluorescent analysis of (-20°C Ethanol) fixed HeLa cells using 21097-1-AP (PRAS40 antibody) at dilution of 1:50 and Alexa Fluor 488-conjugated Goat Anti-Rabbit IgG(H+L).