

## Collagen Type XXVI Polyclonal antibody

Catalog Number: 21106-1-AP

## Basic Information

<b>Catalog Number:</b> 21106-1-AP	<b>GenBank Accession Number:</b> BC110393	<b>Purification Method:</b> Antigen affinity purification
<b>Size:</b> 150ul, Concentration: 800 ug/ml by Nanodrop;	<b>GeneID (NCBI):</b> 136227	<b>Recommended Dilutions:</b> IHC 1:200-1:800 IF/ICC 1:50-1:500
<b>Source:</b> Rabbit	<b>UNIPROT ID:</b> Q96A83	
<b>Isotype:</b> IgG	<b>Full Name:</b> EMI domain containing 2	
<b>Immunogen Catalog Number:</b> AG15382	<b>Calculated MW:</b> 441 aa, 45 kDa	
	<b>Observed MW:</b> 45 kDa	

## Applications

<b>Tested Applications:</b> IHC, IF/ICC, ELISA	<b>Positive Controls:</b>
<b>Species Specificity:</b> human	<b>IHC :</b> human colon tissue, <b>IF/ICC :</b> U2OS cells,

**Note-IHC: suggested antigen retrieval with TE buffer pH 9.0; (\*) Alternatively, antigen retrieval may be performed with citrate buffer pH 6.0**

## Background Information

COL26A1(Collagen alpha-1(XXVI) chain), also known as EMID2. It is expected to be located in the cytoplasm and extracellular space. COL26A1 is expressed in many tissues, especially in brain tissues, including cerebral cortex, cerebellum and basal ganglia. In the single cell type, the expression of COL26A1 is mainly concentrated in excitatory and inhibitory neurons. The protein is a new member of the collagen family. Its function has not been fully demonstrated in thyroid cancer (THCA), but it is known that collagen can promote cancer progression. COL26A1 may be involved in immune-related pathways, such as CTLA4 pathway, IL-10 signaling pathway and chemokine receptor binding chemokine. The molecular weight of COL26A1 is 45 kDa. COL26A1 is significantly up-regulated in thyroid carcinoma, and its high expression is related to poor prognosis. It is also significantly related to tumor microenvironment, which may involve immune-related pathways in the process of tumor occurrence(PMID: 38197076).

## Storage

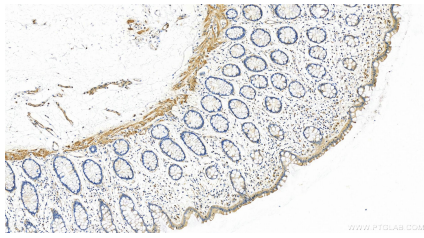
**Storage:**  
Store at -20°C. Stable for one year after shipment.  
**Storage Buffer:**  
PBS with 0.02% sodium azide and 50% glycerol  
 Aliquoting is unnecessary for -20°C storage

\*\*\* 20ul sizes contain 0.1%BSA

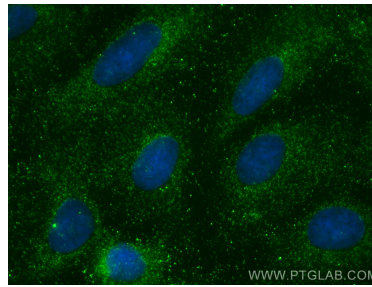
For technical support and original validation data for this product please contact:  
 T: 1 (888) 4PTGLAB (1-888-478-4522) (toll free in USA), or 1(312) 455-8498 (outside USA)  
 E: [proteintech@ptglab.com](mailto:proteintech@ptglab.com)  
 W: [ptglab.com](http://ptglab.com)

This product is exclusively available under Proteintech Group brand and is not available to purchase from any other manufacturer.

## Selected Validation Data



Immunohistochemical analysis of paraffin-embedded human colon tissue slide using 21106-1-AP (EMID2 antibody) at dilution of 1:400 (under 20x lens). Heat mediated antigen retrieval with Tris-EDTA buffer (pH 9.0).



Immunofluorescent analysis of (-20°C Methanol) fixed U2OS cells using EMID2 antibody (21106-1-AP) at dilution of 1:200 and CoraLite® 488-Conjugated AffiniPure Goat Anti-Rabbit IgG(H+L).