

For Research Use Only

Collagen Type XXVI Polyclonal antibody, PBS Only

Catalog Number: 21106-1-PBS



Basic Information

Catalog Number: 21106-1-PBS	GenBank Accession Number: BC110393	Purification Method: Antigen affinity purification
Size: 100ug, Concentration: 1 mg/ml by Nanodrop;	GeneID (NCBI): 136227	
Source: Rabbit	UNIPROT ID: Q96A83	
Isotype: IgG	Full Name: EMI domain containing 2	
Immunogen Catalog Number: AG15382	Calculated MW: 441 aa, 45 kDa	
	Observed MW: 45 kDa	

Applications

Tested Applications:
IHC, IF/ICC, Indirect ELISA

Species Specificity:
human

Background Information

COL26A1(Collagen alpha-1(XXVI) chain), also known as EMID2. It is expected to be located in the cytoplasm and extracellular space. COL26A1 is expressed in many tissues, especially in brain tissues, including cerebral cortex, cerebellum and basal ganglia. In the single cell type, the expression of COL26A1 is mainly concentrated in excitatory and inhibitory neurons. The protein is a new member of the collagen family. Its function has not been fully demonstrated in thyroid cancer (THCA), but it is known that collagen can promote cancer progression. COL26A1 may be involved in immune-related pathways, such as CTLA4 pathway, IL-10 signaling pathway and chemokine receptor binding chemokine. The molecular weight of COL26A1 is 45 kDa. COL26A1 is significantly up-regulated in thyroid carcinoma, and its high expression is related to poor prognosis. It is also significantly related to tumor microenvironment, which may involve immune-related pathways in the process of tumor occurrence(PMID: 38197076).

Storage

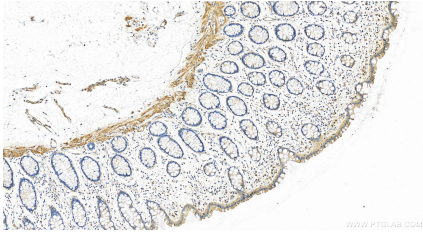
Storage:
Store at -80°C.

Storage Buffer:
PBS only

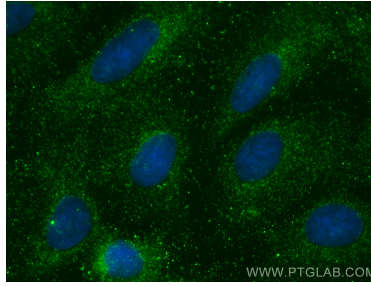
For technical support and original validation data for this product please contact:
T: 1 (888) 4PTGLAB (1-888-478-4522) (toll free in USA), or 1(312) 455-8498 (outside USA) E: proteintech@ptglab.com
W: ptglab.com

This product is exclusively available under Proteintech Group brand and is not available to purchase from any other manufacturer.

Selected Validation Data



Immunohistochemical analysis of paraffin-embedded human colon tissue slide using 21106-1-AP (EMID2 antibody) at dilution of 1:400 (under 20x lens). Heat mediated antigen retrieval with Tris-EDTA buffer (pH 9.0). This data was developed using the same antibody clone with 21106-1-PBS in a different storage buffer formulation.



Immunofluorescent analysis of (-20°C Methanol) fixed U2OS cells using EMID2 antibody (21106-1-AP) at dilution of 1:200 and CoraLite® 488-Conjugated AffiniPure Goat Anti-Rabbit IgG(H+L). This data was developed using the same antibody clone with 21106-1-PBS in a different storage buffer formulation.