

For Research Use Only

# Ceruloplasmin Polyclonal antibody

Catalog Number: 21131-1-AP

Featured Product

9 Publications



## Basic Information

### Catalog Number:

21131-1-AP

### Size:

150ul, Concentration: 300 ug/ml by Nanodrop;

### Source:

Rabbit

### Isotype:

IgG

### Immunogen Catalog Number:

AG15535

### GenBank Accession Number:

BC146663

### GeneID (NCBI):

1356

### UNIPROT ID:

P00450

### Full Name:

ceruloplasmin (ferroxidase)

### Calculated MW:

1065 aa, 122 kDa

### Observed MW:

130-140 kDa, 85 kDa

### Purification Method:

Antigen affinity purification

### Recommended Dilutions:

WB 1:500-1:2000

IHC 1:400-1:1600

## Applications

### Tested Applications:

WB, IHC, ELISA

### Cited Applications:

WB, IHC, IF

### Species Specificity:

human, mouse

### Cited Species:

human, mouse, chicken

**Note-IHC: suggested antigen retrieval with TE buffer pH 9.0; (\*) Alternatively, antigen retrieval may be performed with citrate buffer pH 6.0**

### Positive Controls:

**WB**: human blood tissue, mouse brain tissue, human plasma tissue

**IHC**: human tonsillitis tissue, human colon tissue, human hepatocirrhosis tissue

## Background Information

Ceruloplasmin (CP) is a serum glycoprotein synthesized by hepatocytes and functions as the major transport protein of copper in blood where it acts as ferroxidase and is required for iron transport of transferrin. The intact ceruloplasmin migrated around 130-140 kDa and some proteolytic cleaved fragments could also be observed.

## Notable Publications

Author	Pubmed ID	Journal	Application
Zhong-Da Li	36443285	Cell Death Dis	WB,IF
Hai-Yan Chen	36433654	J Clin Pharmacol	WB
Shanshan Sha	35954297	Cells	WB,IHC

## Storage

### Storage:

Store at -20°C. Stable for one year after shipment.

### Storage Buffer:

PBS with 0.02% sodium azide and 50% glycerol pH 7.3.

Aliquoting is unnecessary for -20°C storage

\*\*\* 20ul sizes contain 0.1% BSA

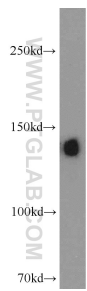
For technical support and original validation data for this product please contact:

T: 1 (888) 4PTGLAB (1-888-478-4522) (toll free in USA), or 1(312) 455-8498 (outside USA)

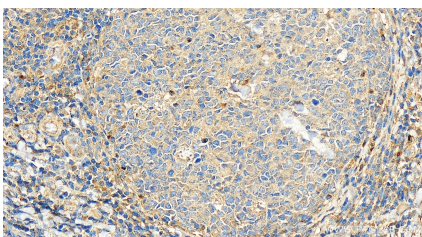
E: [proteintech@ptglab.com](mailto:proteintech@ptglab.com)  
W: [ptglab.com](http://ptglab.com)

This product is exclusively available under Proteintech Group brand and is not available to purchase from any other manufacturer.

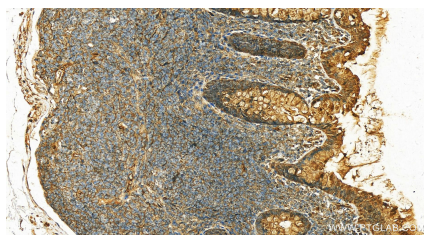
Selected Validation Data



human blood were subjected to SDS PAGE followed by western blot with 21131-1-AP (Ceruloplasmin antibody) at dilution of 1:1000 incubated at room temperature for 1.5 hours.



Immunohistochemical analysis of paraffin-embedded human tonsillitis tissue slide using 21131-1-AP (Ceruloplasmin antibody) at dilution of 1:800 (under 20x lens). Heat mediated antigen retrieval with Tris-EDTA buffer (pH 9.0).



Immunohistochemical analysis of paraffin-embedded human normal colon slide using 21131-1-AP (Ceruloplasmin antibody) at dilution of 1:200 (under 20x lens). Heat mediated antigen retrieval with Tris-EDTA buffer (pH 9.0).