

For Research Use Only

# MAN2A1 Polyclonal antibody

Catalog Number: 21132-1-AP



## Basic Information

<b>Catalog Number:</b> 21132-1-AP	<b>GenBank Accession Number:</b> BC142656	<b>Purification Method:</b> Antigen affinity purification
<b>Size:</b> 150ul , Concentration: 400 ug/ml by Nanodrop;	<b>GeneID (NCBI):</b> 4124	<b>Recommended Dilutions:</b> IHC 1:50-1:500 IF/ICC 1:20-1:200
<b>Source:</b> Rabbit	<b>UNIPROT ID:</b> Q16706	
<b>Isotype:</b> IgG	<b>Full Name:</b> mannosidase, alpha, class 2A, member 1	
<b>Immunogen Catalog Number:</b> AG15536	<b>Calculated MW:</b> 1144 aa, 131 kDa	

## Applications

<b>Tested Applications:</b> IHC, IF/ICC, ELISA	<b>Positive Controls:</b>
<b>Species Specificity:</b> human, mouse	<b>IHC :</b> human stomach tissue, mouse stomach tissue
<b>Note-IHC:</b> suggested antigen retrieval with <b>TE buffer pH 9.0; (*) Alternatively, antigen retrieval may be performed with citrate buffer pH 6.0</b>	<b>IF/ICC :</b> HeLa cells,

## Storage

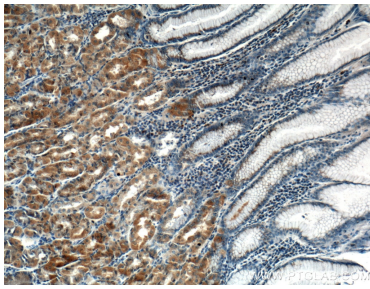
**Storage:**  
Store at -20°C. Stable for one year after shipment.  
**Storage Buffer:**  
PBS with 0.02% sodium azide and 50% glycerol pH 7.3.  
Aliquoting is unnecessary for -20°C storage

\*\*\* 20ul sizes contain 0.1% BSA

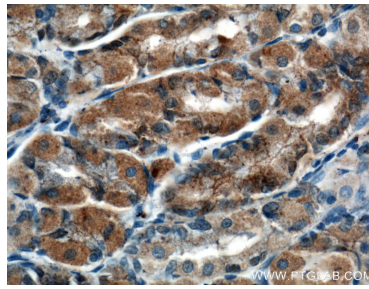
For technical support and original validation data for this product please contact:  
T: 1 (888) 4PTGLAB (1-888-478-4522) (toll free in USA), or 1(312) 455-8498 (outside USA)  
E: [proteintech@ptglab.com](mailto:proteintech@ptglab.com)  
W: [ptglab.com](http://ptglab.com)

This product is exclusively available under Proteintech Group brand and is not available to purchase from any other manufacturer.

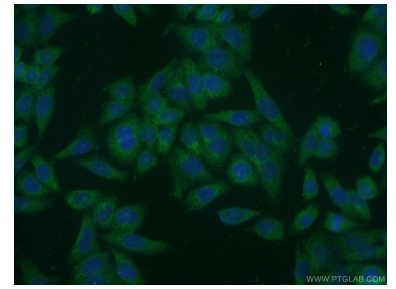
## Selected Validation Data



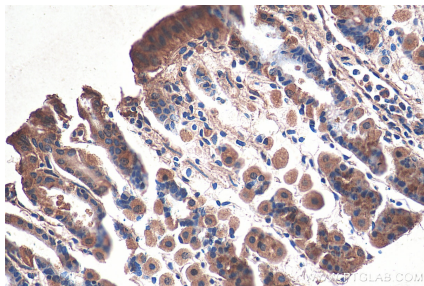
Immunohistochemical analysis of paraffin-embedded human stomach tissue slide using 21132-1-AP (MAN2A1 antibody) at dilution of 1:200 (under 10x lens).



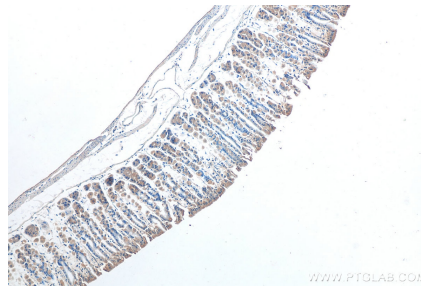
Immunohistochemical analysis of paraffin-embedded human stomach tissue slide using 21132-1-AP (MAN2A1 antibody) at dilution of 1:200 (under 40x lens).



Immunofluorescent analysis of HeLa cells using 21132-1-AP (MAN2A1 antibody) at dilution of 1:50 and Alexa Fluor 488-conjugated Goat Anti-Rabbit IgG(H+L).



Immunohistochemical analysis of paraffin-embedded mouse stomach tissue slide using 21132-1-AP (MAN2A1 antibody) at dilution of 1:200 (under 40x lens).



Immunohistochemical analysis of paraffin-embedded mouse stomach tissue slide using 21132-1-AP (MAN2A1 antibody) at dilution of 1:500 (under 10x lens).