

For Research Use Only

LIPC Polyclonal antibody

Catalog Number: 21133-1-AP

Featured Product

5 Publications



Basic Information

Catalog Number: 21133-1-AP	GenBank Accession Number: BC146659	Purification Method: Antigen affinity purification
Size: 150ul, Concentration: 300 µg/ml by Nanodrop and 267 µg/ml by Bradford method using BSA as the standard;	GeneID (NCBI): 3990	Recommended Dilutions: WB 1:1000-1:4000 IHC 1:20-1:200 IF 1:20-1:200
Source: Rabbit	Full Name: Lipase, hepatic	
Isotype: IgG	Calculated MW: 499 aa, 56 kDa	
Immunogen Catalog Number: AG15538	Observed MW: 65 kDa	

Applications

Tested Applications:

IF, IHC, WB, ELISA

Cited Applications:

IHC, WB

Species Specificity:

human, mouse, rat

Cited Species:

human, mouse, rat

Note-IHC: suggested antigen retrieval with TE buffer pH 9.0; (*) Alternatively, antigen retrieval may be performed with citrate buffer pH 6.0

Positive Controls:

WB: mouse heart tissue, mouse liver tissue, HepG2 cells, rat heart tissue

IHC: human lung cancer tissue,

IF: HepG2 cells,

Background Information

LIPC, also named as HTGL and HL, belongs to the AB hydrolase superfamily and Lipase family. It has the capacity to catalyze hydrolysis of phospholipids, mono-, di-, and triglycerides, and acyl-CoA thioesters. LIPC is an important enzyme in HDL metabolism. It binds heparin.

Notable Publications

Author	Pubmed ID	Journal	Application
Ruxia Deng	36274132	J Transl Med	IHC
Ling Chen	32720164	Arch Pharm Res	WB
Karuna Irungbam	32612285	Lab Invest	IHC

Storage

Storage:

Store at -20°C. Stable for one year after shipment.

Storage Buffer:

PBS with 0.02% sodium azide and 50% glycerol pH 7.3.

Aliquoting is unnecessary for -20°C storage

*** 20ul sizes contain 0.1% BSA

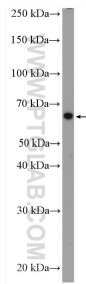
For technical support and original validation data for this product please contact:

T: 1 (888) 4PTGLAB (1-888-478-4522) (toll free in USA), or 1(312) 455-8498 (outside USA)

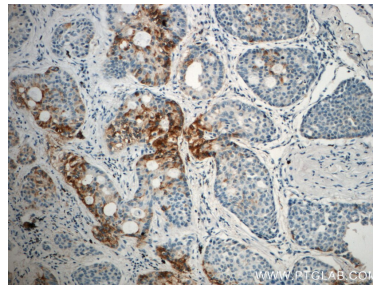
E: proteintech@ptglab.com
W: ptglab.com

This product is exclusively available under Proteintech Group brand and is not available to purchase from any other manufacturer.

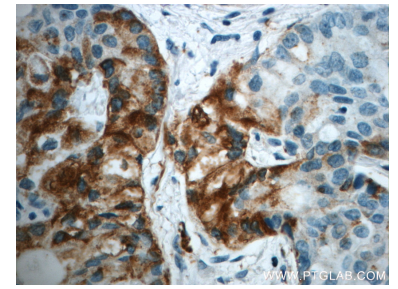
Selected Validation Data



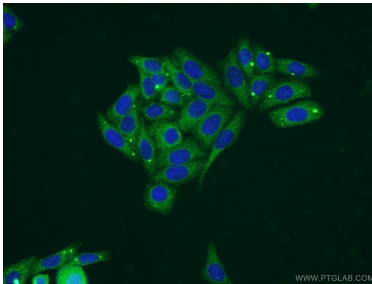
HepG2 cells were subjected to SDS PAGE followed by western blot with 21133-1-AP (LIPC antibody) at dilution of 1:300 incubated at room temperature for 1.5 hours.



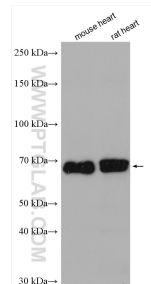
Immunohistochemical analysis of paraffin-embedded human lung cancer slide using 21133-1-AP (LIPC Antibody) at dilution of 1:50.



Immunohistochemical analysis of paraffin-embedded human lung cancer slide using 21133-1-AP (LIPC Antibody) at dilution of 1:50.



Immunofluorescent analysis of HepG2 cells using 21133-1-AP (LIPC antibody) at dilution of 1:50 and Alexa Fluor 488-conjugated AffiniPure Goat Anti-Rabbit IgG(H+L).



Various lysates were subjected to SDS PAGE followed by western blot with 21133-1-AP (LIPC antibody) at dilution of 1:2000 incubated at room temperature for 1.5 hours.