

For Research Use Only

Fibulin-7 Polyclonal antibody

Catalog Number: 21136-1-AP



Basic Information

Catalog Number:

21136-1-AP

Size:

150ul , Concentration: 450 ug/ml by Nanodrop and 373 ug/ml by Bradford method using BSA as the standard;

Source:

Rabbit

Isotype:

IgG

Immunogen Catalog Number:

AG15564

GenBank Accession Number:

BC035784

GeneID (NCBI):

129804

UNIPROT ID:

Q53RD9

Full Name:

fibulin 7

Calculated MW:

439 aa, 47 kDa

Observed MW:

47 kDa

Purification Method:

Antigen Affinity purified

Recommended Dilutions:

WB 1:500-1:1000

Applications

Tested Applications:

WB, ELISA

Species Specificity:

human, pig

Positive Controls:

WB : pig cartilage tissue,

Background Information

Fibulins are a family of extracellular matrix glycoproteins associated with basement membranes, elastic fibers, and other matrices (PMID: 19189051). The family members are defined by the presence of two structural modules, a tandem repeat of epidermal growth factor-like modules, and a unique C-terminal fibulin-type module (PMID: 19189051). They play an important role in regulating multiple cellular functions such as adhesion, growth, motility, and survival (PMID: 32429873). Fibulin-7, also named as TM14, was first identified in the mouse tooth germ cDNA microarray by differential hybridization (PMID: 17699513). Fibulin-7 is expressed in developing odontoblasts, in the giant trophoblast layer of the placenta, in the choroid of the eyes as well as in the cartilage (PMID: 32429873). It plays important roles in both the differentiation and maintenance of odontoblasts as well as in dentin formation.

Storage

Storage:

Store at -20°C. Stable for one year after shipment.

Storage Buffer:

PBS with 0.02% sodium azide and 50% glycerol pH 7.3.

Aliquoting is unnecessary for -20°C storage

*** 20ul sizes contain 0.1% BSA

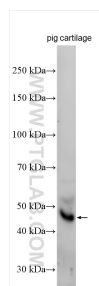
For technical support and original validation data for this product please contact:

T: 1 (888) 4PTGLAB (1-888-478-4522) (toll free in USA), or 1(312) 455-8498 (outside USA)

E: proteintech@ptglab.com
W: ptglab.com

This product is exclusively available under Proteintech Group brand and is not available to purchase from any other manufacturer.

Selected Validation Data



pig cartilage tissue was subjected to SDS PAGE followed by western blot with 21136-1-AP (Fibulin-7 antibody) at dilution of 1:600 incubated at room temperature for 1.5 hours.