

For Research Use Only

GALNT1 Polyclonal antibody

Catalog Number: 21139-1-AP



Basic Information

Catalog Number: 21139-1-AP	GenBank Accession Number: BC038440	Purification Method: Antigen affinity purification
Size: 150ul , Concentration: 150 µg/ml by Nanodrop and 327 µg/ml by Bradford method using BSA as the standard;	GeneID (NCBI): 2589	Recommended Dilutions: WB 1:500-1:1000
Source: Rabbit	Full Name: UDP-N-acetyl-alpha-D-galactosamine:polypeptide N-acetylgalactosaminyltransferase 1 (GalNAc-T1)	
Isotype: IgG	Calculated MW: 559 aa, 64 kDa	
Immunogen Catalog Number: AG15591	Observed MW: 64 kDa	

Applications

Tested Applications: WB, ELISA	Positive Controls: WB : BGC-823 cells, HepG2 cells, HuH-7 cells, MKN-45 cells
Species Specificity: human, mouse, rat	

Background Information

N-acetylgalactosaminyltransferase 1 (GALNT1) is a member of a large family of Golgi resident polypeptide GALNT that initiate mucin-type O-glycosylation by transfer of α-GalNAc from UDP-GalNAc to serine or threonine residues of proteins. GALNT1 is frequently up-regulated in HCC and gastric cancer, and higher GALNT1 expression levels are associated with poorer overall survival (PMID: 25730904, 36439876). The antibody against GALNT1 recognized a specific band at 64 kDa.

Storage

Storage:
Store at -20°C. Stable for one year after shipment.
Storage Buffer:
PBS with 0.02% sodium azide and 50% glycerol pH 7.3.
Aliquoting is unnecessary for -20°C storage

*** 20ul sizes contain 0.1% BSA

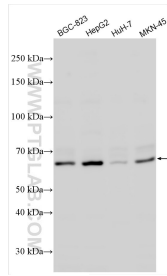
For technical support and original validation data for this product please contact:

T: 1 (888) 4PTGLAB (1-888-478-4522) (toll free in USA), or 1(312) 455-8498 (outside USA)

E: proteintech@ptglab.com
W: ptglab.com

This product is exclusively available under Proteintech Group brand and is not available to purchase from any other manufacturer.

Selected Validation Data



Various lysates were subjected to SDS PAGE followed by western blot with 21139-1-AP (GALNT1 antibody) at dilution of 1:500 incubated at room temperature for 1.5 hours.