

For Research Use Only

# ITIH1 Polyclonal antibody, PBS Only

Catalog Number: 21141-1-PBS



## Basic Information

<b>Catalog Number:</b> 21141-1-PBS	<b>GenBank Accession Number:</b> BC069464	<b>Purification Method:</b> Antigen affinity purification
<b>Size:</b> 100ug , Concentration: 1 mg/ml by Nanodrop;	<b>GeneID (NCBI):</b> 3697	
<b>Source:</b> Rabbit	<b>UNIPROT ID:</b> P19827	
<b>Isotype:</b> IgG	<b>Full Name:</b> inter-alpha (globulin) inhibitor H1	
<b>Immunogen Catalog Number:</b> AG15598	<b>Calculated MW:</b> 911 aa, 101 kDa	
	<b>Observed MW:</b> 70-76 kDa	

## Applications

**Tested Applications:**  
WB, Indirect ELISA

**Species Specificity:**  
human, mouse, rat

## Background Information

ITIH1 (inter-alpha-trypsin inhibitor heavy chain 1), also named as IGHEP1 and SHAP. It is a key component of the inter-alpha-trypsin inhibitor (ITI) family, which plays a crucial role in extracellular matrix (ECM) stabilization and inflammation regulation. ITIH1 forms a complex with bikunin (a light chain) and other heavy chains (ITIH2, ITIH3, ITIH4), contributing to the stabilization of hyaluronan-rich matrices. The calculated molecular weight of the ITIH1 mature form is 101 kDa, but the actual observed molecular weight is about 76 kDa (PMID: 9677337).

## Storage

**Storage:**  
Store at -80°C.

**Storage Buffer:**  
PBS only, pH7.3

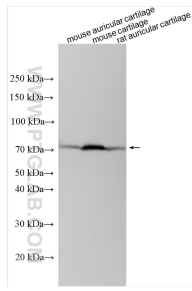
For technical support and original validation data for this product please contact:

T: 1 (888) 4PTGLAB (1-888-478-4522) (toll free in USA), or 1(312) 455-8498 (outside USA)

E: [proteintech@ptglab.com](mailto:proteintech@ptglab.com)  
W: [ptglab.com](http://ptglab.com)

**This product is exclusively available under Proteintech Group brand and is not available to purchase from any other manufacturer.**

## Selected Validation Data



Various lysates were subjected to SDS PAGE followed by western blot with 21141-1-AP (ITI1 antibody) at dilution of 1:1000 incubated at room temperature for 1.5 hours. This data was developed using the same antibody clone with 21141-1-PBS in a different storage buffer formulation.