

For Research Use Only

LARS Polyclonal antibody

Catalog Number: 21146-1-AP

Featured Product

11 Publications



Basic Information

Catalog Number:

21146-1-AP

Size:

150ul, Concentration: 300 ug/ml by Nanodrop and 267 ug/ml by Bradford method using BSA as the standard;

Source:

Rabbit

Isotype:

IgG

Immunogen Catalog Number:

AG15684

GenBank Accession Number:

BC151214

GeneID (NCBI):

51520

UNIPROT ID:

Q9P2J5

Full Name:

leucyl-tRNA synthetase

Calculated MW:

1176 aa, 134 kDa

Observed MW:

135-140 kDa

Purification Method:

Antigen affinity purification

Recommended Dilutions:

WB 1:500-1:1000

IP 0.5-4.0 ug for 1.0-3.0 mg of total protein lysate

IHC 1:100-1:400

IF/ICC 1:50-1:500

Applications

Tested Applications:

WB, IHC, IF/ICC, IP, ELISA

Cited Applications:

WB, IHC, IF, IP, CoIP

Species Specificity:

human

Cited Species:

human, mouse

Note-IHC: suggested antigen retrieval with TE buffer pH 9.0; (*) Alternatively, antigen retrieval may be performed with citrate buffer pH 6.0

Positive Controls:

WB : A549 cells, HeLa cells, Jurkat cells

IP : Jurkat cells,

IHC : human colon tissue,

IF/ICC : HeLa cells,

Notable Publications

Author	Pubmed ID	Journal	Application
Peter Gollwitzer	36097072	Nat Cell Biol	WB
Krishnendu Khan	36037331	Proc Natl Acad Sci U S A	WB
Angela Papageorgiou	25790369	PLoS One	WB

Storage

Storage:

Store at -20°C. Stable for one year after shipment.

Storage Buffer:

PBS with 0.02% sodium azide and 50% glycerol pH 7.3.

Aliquoting is unnecessary for -20°C storage

*** 20ul sizes contain 0.1% BSA

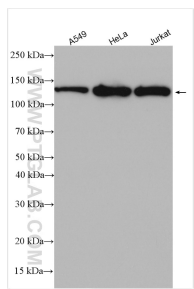
For technical support and original validation data for this product please contact:

T: 1 (888) 4PTGLAB (1-888-478-4522) (toll free in USA), or 1(312) 455-8498 (outside USA)

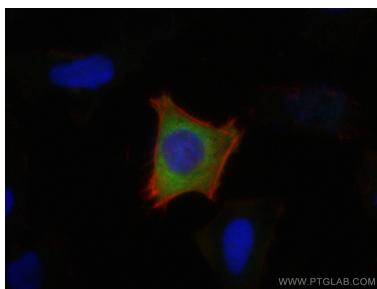
E: proteintech@ptglab.com
W: ptglab.com

This product is exclusively available under Proteintech Group brand and is not available to purchase from any other manufacturer.

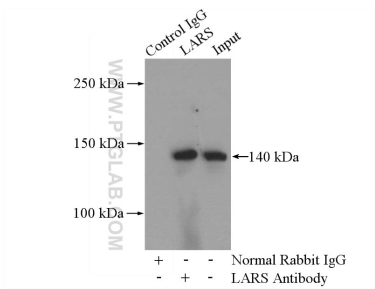
Selected Validation Data



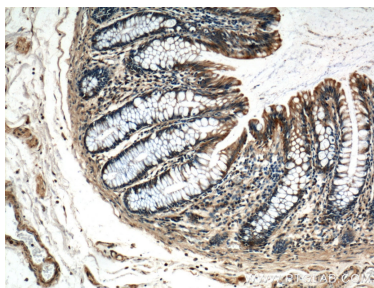
Various lysates were subjected to SDS PAGE followed by western blot with 21146-1-AP (LARS antibody) at dilution of 1:600 incubated at room temperature for 1.5 hours.



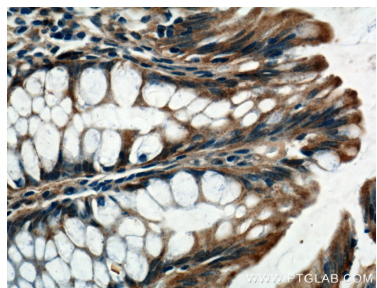
Immunofluorescent analysis of (4% PFA) fixed HeLa cells using LARS antibody (21146-1-AP) at dilution of 1:200 and CoraLite®488-Conjugated Goat Anti-Rabbit IgG(H+L), CL594-Phalloidin (red).



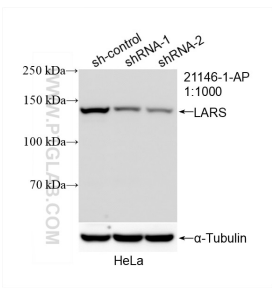
IP result of anti-LARS (IP:21146-1-AP, 4ug; Detection:21146-1-AP 1:500) with Jurkat cells lysate 2400ug.



Immunohistochemical analysis of paraffin-embedded human colon tissue slide using 21146-1-AP (LARS Antibody) at dilution of 1:200 (under 10x lens).



Immunohistochemical analysis of paraffin-embedded human colon tissue slide using 21146-1-AP (LARS Antibody) at dilution of 1:200 (under 40x lens).



WB result of LARS antibody (21146-1-AP; 1:1000; incubated at room temperature for 1.5 hours) with sh-Control and sh-LARS transfected HeLa cells.