

For Research Use Only

LARS Polyclonal antibody, PBS Only

Catalog Number: 21146-1-PBS

Featured Product



Basic Information

Catalog Number:

21146-1-PBS

Size:

100ug, Concentration: 1 mg/ml by Nanodrop;

Source:

Rabbit

Isotype:

IgG

Immunogen Catalog Number:

AG15684

GenBank Accession Number:

BC151214

GeneID (NCBI):

51520

UNIPROT ID:

Q9P2J5

Full Name:

leucyl-tRNA synthetase

Calculated MW:

1176 aa, 134 kDa

Observed MW:

135-140 kDa

Purification Method:

Antigen affinity purification

Applications

Tested Applications:

WB, IHC, IF/ICC, IP, Indirect ELISA

Species Specificity:

human

Storage

Storage:

Store at -80°C.

Storage Buffer:

PBS only, pH7.3

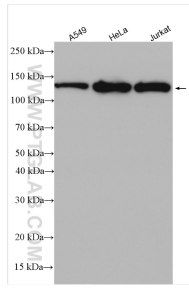
For technical support and original validation data for this product please contact:

T: 1 (888) 4PTGLAB (1-888-478-4522) (toll free in USA), or 1(312) 455-8498 (outside USA)

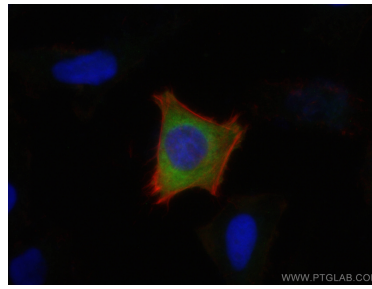
E: proteintech@ptglab.com
W: ptglab.com

This product is exclusively available under Proteintech Group brand and is not available to purchase from any other manufacturer.

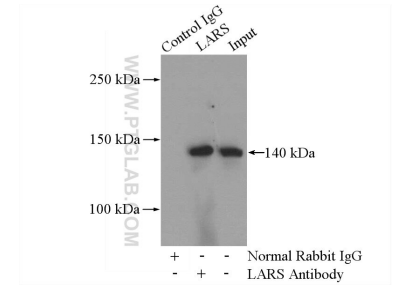
Selected Validation Data



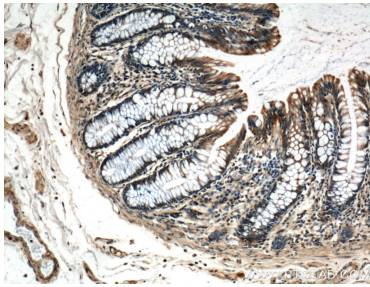
Various lysates were subjected to SDS PAGE followed by western blot with 21146-1-AP (LARS antibody) at dilution of 1:600 incubated at room temperature for 1.5 hours. This data was developed using the same antibody clone with 21146-1-PBS in a different storage buffer formulation.



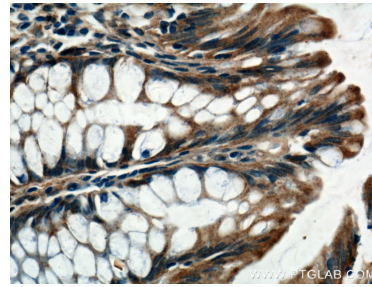
Immunofluorescent analysis of (4% PFA) fixed HeLa cells using LARS antibody (21146-1-AP) at dilution of 1:200 and CoraLite@488-Conjugated AffiniPure Goat Anti-Rabbit IgG(H+L), CL594-Phalloidin (red). This data was developed using the same antibody clone with 21146-1-PBS in a different storage buffer formulation.



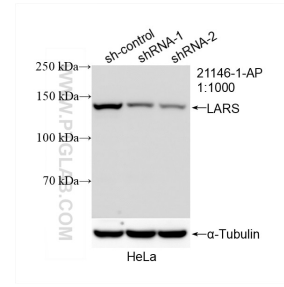
IP result of anti-LARS (IP:21146-1-AP, 4ug; Detection:21146-1-AP 1:500) with Jurkat cells lysate 2400ug. This data was developed using the same antibody clone with 21146-1-PBS in a different storage buffer formulation.



Immunohistochemical analysis of paraffin-embedded human colon tissue slide using 21146-1-AP (LARS Antibody) at dilution of 1:200 (under 10x lens). This data was developed using the same antibody clone with 21146-1-PBS in a different storage buffer formulation.



Immunohistochemical analysis of paraffin-embedded human colon tissue slide using 21146-1-AP (LARS Antibody) at dilution of 1:200 (under 40x lens). This data was developed using the same antibody clone with 21146-1-PBS in a different storage buffer formulation.



WB result of LARS antibody (21146-1-AP; 1:1000; incubated at room temperature for 1.5 hours) with sh-Control and sh-LARS transfected HeLa cells. This data was developed using the same antibody clone with 21146-1-PBS in a different storage buffer formulation.