

For Research Use Only

EBF3 Polyclonal antibody

Catalog Number: 21148-1-AP



Basic Information

Catalog Number:

21148-1-AP

Size:

150ul , Concentration: 240 ug/ml by Nanodrop and 227 ug/ml by Bradford method using BSA as the standard;

Source:

Rabbit

Isotype:

IgG

Immunogen Catalog Number:

AG15693

GenBank Accession Number:

BC126130

GeneID (NCBI):

253738

UNIPROT ID:

Q9H4W6

Full Name:

early B-cell factor 3

Calculated MW:

596 aa, 65 kDa

Observed MW:

60-70 kDa

Purification Method:

Antigen affinity purification

Recommended Dilutions:

WB 1:500-1:1000

Applications

Tested Applications:

WB, ELISA

Species Specificity:

human

Positive Controls:

WB : HeLa cells,

Storage

Storage:

Store at -20°C. Stable for one year after shipment.

Storage Buffer:

PBS with 0.02% sodium azide and 50% glycerol pH 7.3.

Aliquoting is unnecessary for -20°C storage

*** 20ul sizes contain 0.1% BSA

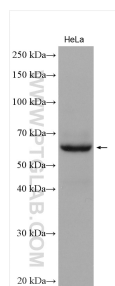
For technical support and original validation data for this product please contact:

T: 1 (888) 4PTGLAB (1-888-478-4522) (toll free in USA), or 1(312) 455-8498 (outside USA)

E: proteintech@ptglab.com
W: ptglab.com

This product is exclusively available under Proteintech Group brand and is not available to purchase from any other manufacturer.

Selected Validation Data



HeLa cells were subjected to SDS PAGE followed by western blot with 21148-1-AP (EBF3 antibody) at dilution of 1:800 incubated at room temperature for 1.5 hours.