

For Research Use Only

# SLITRK6 Polyclonal antibody

Catalog Number: 21150-1-AP



## Basic Information

<b>Catalog Number:</b> 21150-1-AP	<b>GenBank Accession Number:</b> BC101070	<b>Purification Method:</b> Antigen affinity purification
<b>Size:</b> 150ul , Concentration: 400 µg/ml by Nanodrop and 347 µg/ml by Bradford method using BSA as the standard;	<b>GeneID (NCBI):</b> 84189	<b>Recommended Dilutions:</b> WB 1:500-1:2000 IF 1:10-1:100
<b>Source:</b> Rabbit	<b>Full Name:</b> SLIT and NTRK-like family, member 6	
<b>Isotype:</b> IgG	<b>Calculated MW:</b> 841 aa, 95 kDa	
<b>Immunogen Catalog Number:</b> AG15701	<b>Observed MW:</b> 95-100 kDa	

## Applications

<b>Tested Applications:</b> FC, IF, WB, ELISA	<b>Positive Controls:</b>
<b>Species Specificity:</b> human, mouse, rat	<b>WB:</b> A549 cells, mouse lung tissue <b>IF:</b> HepG2 cells,

## Background Information

SLITRK6 is a member of the SLITRK family. Members of this family are integral membrane proteins that are characterized by two N-terminal leucine-rich repeat (LRR) domains and a C-terminal region that shares homology with trk neurotrophin receptors. This protein functions as a regulator of neurite outgrowth required for normal hearing and vision. Mutations in SLITRK6 gene are a cause of myopia and deafness.

## Storage

**Storage:**  
Store at -20°C. Stable for one year after shipment.  
**Storage Buffer:**  
PBS with 0.02% sodium azide and 50% glycerol pH 7.3.  
Aliquoting is unnecessary for -20°C storage

\*\*\* 20ul sizes contain 0.1% BSA

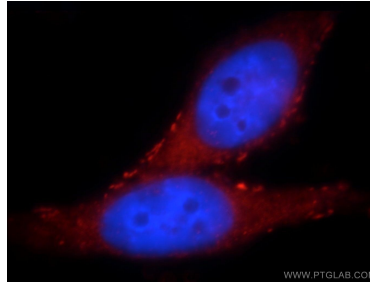
For technical support and original validation data for this product please contact:  
T: 1 (888) 4PTGLAB (1-888-478-4522) (toll free in USA), or 1(312) 455-8498 (outside USA)  
E: proteintech@ptglab.com  
W: ptglab.com

This product is exclusively available under Proteintech Group brand and is not available to purchase from any other manufacturer.

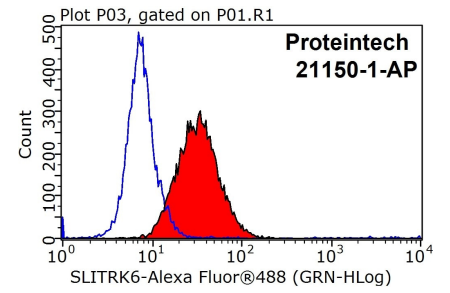
## Selected Validation Data



A549 cells were subjected to SDS PAGE followed by western blot with 21150-1-AP (SLITRK6 antibody) at dilution of 1:500 incubated at room temperature for 1.5 hours.



Immunofluorescent analysis of HepG2 cells, using SLITRK6 antibody 21150-1-AP at 1:25 dilution and Rhodamine-labeled goat anti-rabbit IgG (red). Blue pseudocolor = DAPI (fluorescent DNA dye).



1X10<sup>6</sup> HepG2 cells were stained with 0.2ug SLITRK6 antibody (21150-1-AP, red) and control antibody (blue). Fixed with 90% MeOH blocked with 3% BSA (30 min). Alexa Fluor 488-conjugated AffiniPure Goat Anti-Rabbit IgG(H+L) with dilution 1:1000.