

For Research Use Only

SLITRK6 Polyclonal antibody, PBS Only

Catalog Number: 21150-1-PBS



Basic Information

Catalog Number:

21150-1-PBS

Size:

100ug, Concentration: 1 mg/ml by Nanodrop;

Source:

Rabbit

Isotype:

IgG

Immunogen Catalog Number:

AG15701

GenBank Accession Number:

BC101070

GeneID (NCBI):

84189

UNIPROT ID:

Q9H5Y7

Full Name:

SLIT and NTRK-like family, member 6

Calculated MW:

841 aa, 95 kDa

Observed MW:

95-100 kDa

Purification Method:

Antigen affinity purification

Applications

Tested Applications:

WB, IF/ICC, Indirect ELISA

Species Specificity:

human, mouse, rat

Background Information

SLITRK6 is a member of the SLITRK family. Members of this family are integral membrane proteins that are characterized by two N-terminal leucine-rich repeat (LRR) domains and a C-terminal region that shares homology with trk neurotrophin receptors. This protein functions as a regulator of neurite outgrowth required for normal hearing and vision. Mutations in SLITRK6 gene are a cause of myopia and deafness.

Storage

Storage:

Store at -80°C.

Storage Buffer:

PBS only

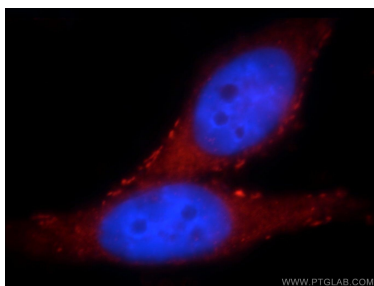
For technical support and original validation data for this product please contact:

T: 1 (888) 4PTGLAB (1-888-478-4522) (toll free in USA), or 1(312) 455-8498 (outside USA)

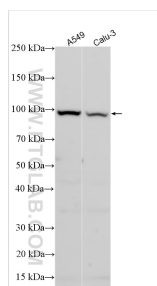
E: proteintech@ptglab.com
W: ptglab.com

This product is exclusively available under Proteintech Group brand and is not available to purchase from any other manufacturer.

Selected Validation Data



Immunofluorescent analysis of HepG2 cells, using SLITRK6 antibody 21150-1-AP at 1:25 dilution and Rhodamine-labeled goat anti-rabbit IgG (red). Blue pseudocolor = DAPI (fluorescent DNA dye). This data was developed using the same antibody clone with 21150-1-PBS in a different storage buffer formulation.



Various lysates were subjected to SDS PAGE followed by western blot with 21150-1-AP (SLITRK6 antibody) at dilution of 1:500 incubated at room temperature for 1.5 hours. This data was developed using the same antibody clone with 21150-1-PBS in a different storage buffer formulation.