

For Research Use Only

LILRA4 Polyclonal antibody

Catalog Number: 21153-1-AP

1 Publications



Basic Information

Catalog Number:

21153-1-AP

Size:

150ul , Concentration: 450 ug/ml by Nanodrop and 413 ug/ml by Bradford method using BSA as the standard;

Source:

Rabbit

Isotype:

IgG

Immunogen Catalog Number:

AG15721

GenBank Accession Number:

BC109198

GeneID (NCBI):

23547

UNIPROT ID:

P59901

Full Name:

leukocyte immunoglobulin-like receptor, subfamily A (with TM domain), member 4

Calculated MW:

499 aa, 55 kDa

Observed MW:

48-55 kDa

Purification Method:

Antigen affinity purification

Recommended Dilutions:

WB 1:500-1:1000

Applications

Tested Applications:

WB, ELISA

Cited Applications:

WB

Species Specificity:

human, mouse

Cited Species:

human

Positive Controls:

WB : mouse spleen tissue, HL-60 cells, L02 cells

Notable Publications

Author	Pubmed ID	Journal	Application
Chenlei Zheng	38602878	Cell Rep	WB

Storage

Storage:

Store at -20°C. Stable for one year after shipment.

Storage Buffer:

PBS with 0.02% sodium azide and 50% glycerol pH 7.3.

Aliquoting is unnecessary for -20°C storage

*** 20ul sizes contain 0.1% BSA

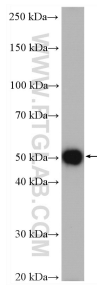
For technical support and original validation data for this product please contact:

T: 1 (888) 4PTGLAB (1-888-478-4522) (toll free in USA), or 1(312) 455-8498 (outside USA)

E: proteintech@ptglab.com
W: ptglab.com

This product is exclusively available under Proteintech Group brand and is not available to purchase from any other manufacturer.

Selected Validation Data



mouse spleen tissue were subjected to SDS PAGE followed by western blot with 21153-1-AP (LILRA4 antibody) at dilution of 1:500 incubated at room temperature for 1.5 hours.