

For Research Use Only

ELOVL6 Polyclonal antibody, PBS Only

Catalog Number: 21160-1-PBS



Basic Information

Catalog Number:

21160-1-PBS

Size:

100ug, Concentration: 1 mg/ml by Nanodrop;

Source:

Rabbit

Isotype:

IgG

Immunogen Catalog Number:

AG14163

GenBank Accession Number:

BC001305

GeneID (NCBI):

79071

UNIPROT ID:

Q9H5J4

Full Name:

ELOVL family member 6, elongation of long chain fatty acids (FEN1/Elo2, SUR4/Elo3-like, yeast)

Calculated MW:

265 aa, 31 kDa

Purification Method:

Antigen affinity purification

Applications

Tested Applications:

IHC, Indirect ELISA

Species Specificity:

human, mouse, rat

Storage

Storage:

Store at -80°C.

Storage Buffer:

PBS only, pH7.3

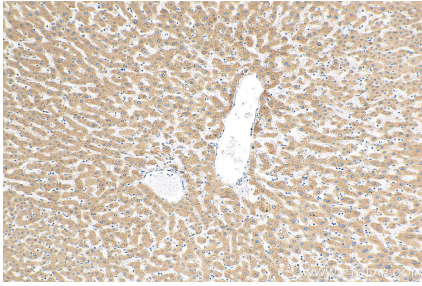
For technical support and original validation data for this product please contact:

T: 1 (888) 4PTGLAB (1-888-478-4522) (toll free in USA), or 1(312) 455-8498 (outside USA)

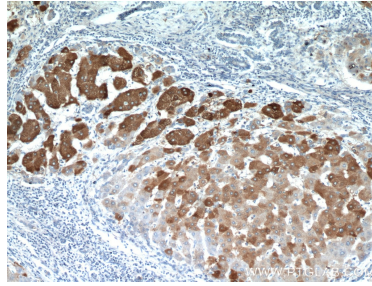
E: proteintech@ptglab.com
W: ptglab.com

This product is exclusively available under Proteintech Group brand and is not available to purchase from any other manufacturer.

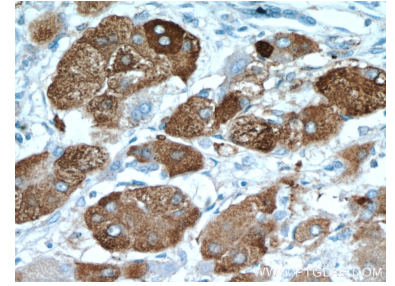
Selected Validation Data



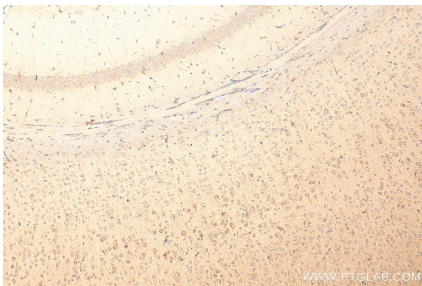
Immunohistochemical analysis of paraffin-embedded human hepatocirrhosis tissue slide using 21160-1-AP (ELOVL6 antibody) at dilution of 1:200 (under 10x lens). Heat mediated antigen retrieval with Tris-EDTA buffer (pH 9.0). This data was developed using the same antibody clone with 21160-1-PBS in a different storage buffer formulation.



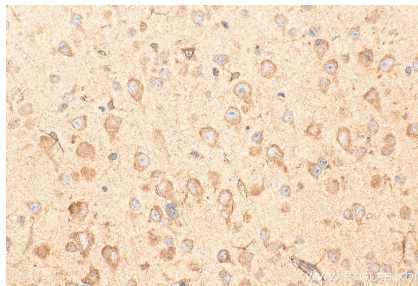
Immunohistochemical analysis of paraffin-embedded human hepatocirrhosis using 21160-1-AP (ELOVL6 antibody) at dilution of 1:100 (under 10x lens). This data was developed using the same antibody clone with 21160-1-PBS in a different storage buffer formulation.



Immunohistochemical analysis of paraffin-embedded human hepatocirrhosis using 21160-1-AP (ELOVL6 antibody) at dilution of 1:100 (under 40x lens). This data was developed using the same antibody clone with 21160-1-PBS in a different storage buffer formulation.



Immunohistochemical analysis of paraffin-embedded mouse brain tissue slide using 21160-1-AP (ELOVL6 antibody) at dilution of 1:200 (under 10x lens). Heat mediated antigen retrieval with Tris-EDTA buffer (pH 9.0). This data was developed using the same antibody clone with 21160-1-PBS in a different storage buffer formulation.



Immunohistochemical analysis of paraffin-embedded mouse brain tissue slide using 21160-1-AP (ELOVL6 antibody) at dilution of 1:200 (under 40x lens). Heat mediated antigen retrieval with Tris-EDTA buffer (pH 9.0). This data was developed using the same antibody clone with 21160-1-PBS in a different storage buffer formulation.