

For Research Use Only

# TRIP6 Polyclonal antibody

Catalog Number: 21163-1-AP



## Basic Information

**Catalog Number:**

21163-1-AP

**Size:**

150ul , Concentration: 453 ug/ml by Bradford method using BSA as the standard;

**Source:**

Rabbit

**Isotype:**

IgG

**Immunogen Catalog Number:**

AG15149

**GenBank Accession Number:**

BC004249

**GeneID (NCBI):**

7205

**UNIPROT ID:**

Q15654

**Full Name:**

thyroid hormone receptor interactor 6

**Calculated MW:**

476 aa, 50 kDa

**Observed MW:**

50-55 kDa

**Purification Method:**

Antigen affinity purification

**Recommended Dilutions:**

WB 1:1000-1:4000

IF/ICC 1:10-1:100

## Applications

**Tested Applications:**

WB, IF/ICC, ELISA

**Species Specificity:**

human, mouse, rat

**Positive Controls:**

WB : HeLa cells, HepG2 cells, human testis tissue, mouse lung tissue

IF/ICC : HepG2 cells,

## Background Information

TRIP6 (thyroid receptor-interacting protein 6), also known as ZRP-1 (zyxin-related protein 1), is a member of the zyxin family that has been implicated in actin reorganization and cell motility. Trip6 has been proposed to transport signals from the cell surface to the nucleus.

## Storage

**Storage:**

Store at -20°C. Stable for one year after shipment.

**Storage Buffer:**

PBS with 0.02% sodium azide and 50% glycerol pH 7.3.

Aliquoting is unnecessary for -20°C storage

\*\*\* 20ul sizes contain 0.1% BSA

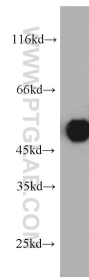
For technical support and original validation data for this product please contact:

T: 1 (888) 4PTGLAB (1-888-478-4522) (toll free in USA), or 1(312) 455-8498 (outside USA)

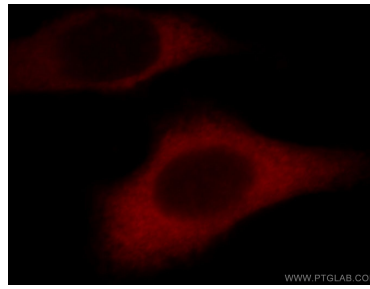
E: [proteintech@ptglab.com](mailto:proteintech@ptglab.com)  
W: [ptglab.com](http://ptglab.com)

This product is exclusively available under Proteintech Group brand and is not available to purchase from any other manufacturer.

## Selected Validation Data



HeLa cells were subjected to SDS PAGE followed by western blot with 21163-1-AP (TRIP6 antibody) at dilution of 1:500 incubated at room temperature for 1.5 hours.



Immunofluorescent analysis of HepG2 cells, using TRIP6 antibody 21163-1-AP at 1:25 dilution and Rhodamine-labeled goat anti-rabbit IgG (red).