

LRPPRC Polyclonal antibody

Catalog Number: 21175-1-AP

Featured Product

38 Publications

Basic Information

Catalog Number:

21175-1-AP

Size:

150ul, Concentration: 700 ug/ml by Nanodrop;

Source:

Rabbit

Isotype:

IgG

Immunogen Catalog Number:

AG15452

GenBank Accession Number:

BC050311

GeneID (NCBI):

10128

UNIPROT ID:

P42704

Full Name:

leucine-rich PPR-motif containing

Calculated MW:

1394 aa, 158 kDa

Observed MW:

130 kDa

Purification Method:

Antigen affinity purification

Recommended Dilutions:

WB 1:5000-1:50000

IP 0.5-4.0 ug for 1.0-3.0 mg of total protein lysate

IHC 1:50-1:500

IF/ICC 1:200-1:800

Applications

Tested Applications:

WB, IHC, IF/ICC, IP, ELISA

Cited Applications:

WB, IHC, IF, IP, CoIP, RIP

Species Specificity:

human, mouse, rat

Cited Species:

human, mouse, rat

Note-IHC: suggested antigen retrieval with TE buffer pH 9.0; (*) Alternatively, antigen retrieval may be performed with citrate buffer pH 6.0

Positive Controls:

WB: HCT 116 cells, mouse heart tissue, HepG2 cells, mouse skeletal muscle tissue, mouse kidney tissue, mouse liver tissue, HeLa cells, rat kidney tissue, rat liver tissue, rat heart tissue, PC-12 cells, SH-SY5Y cells

IP: HeLa cells,

IHC: human kidney tissue, human heart tissue, human normal colon

IF/ICC: U2OS cells, HepG2 cells, HeLa cells, HEK-293 cells

Background Information

LRPPRC (also called LRP130 or GP130) is a 130-kDa RNA-binding protein of the pentatricopeptide repeat family. LRPPRC localizes primarily to the mitochondria where it binds to poly(A) mRNA. It plays a role in the translation or stability of mitochondrially encoded cytochrome c oxidase (COX) subunits. LRPPRC has also been shown to regulate nuclear gene transcription and to bind specific RNA molecules in both the nucleus and the cytoplasm. Mutations in the LRPPRC gene are associated with the French-Canadian type of Leigh syndrome.

Notable Publications

| Author | Pubmed ID | Journal | Application |
|-------------|-----------|------------------------------------|-------------|
| Liping Chen | 25236601 | J Cell Sci | |
| Zitong Zhao | 36328147 | Biochim Biophys Acta Mol Basis Dis | WB |
| Jiaxi Yu | 36191230 | Proc Natl Acad Sci U S A | WB |

Storage

Storage:

Store at -20°C. Stable for one year after shipment.

Storage Buffer:

PBS with 0.02% sodium azide and 50% glycerol pH 7.3.

Aliquoting is unnecessary for -20°C storage

*** 20ul sizes contain 0.1% BSA

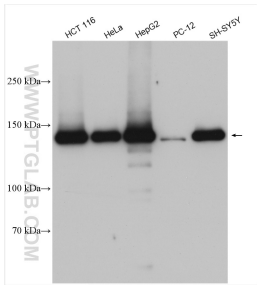
For technical support and original validation data for this product please contact:

T: 1 (888) 4PTGLAB (1-888-478-4522) (toll free in USA), or 1(312) 455-8498 (outside USA)

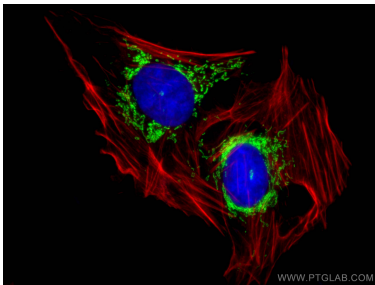
E: proteintech@ptglab.com
 W: ptglab.com

This product is exclusively available under Proteintech Group brand and is not available to purchase from any other manufacturer.

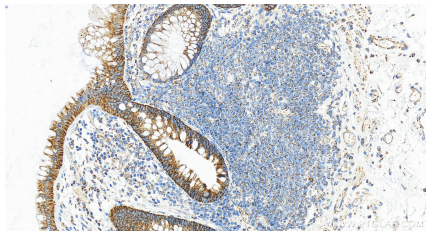
Selected Validation Data



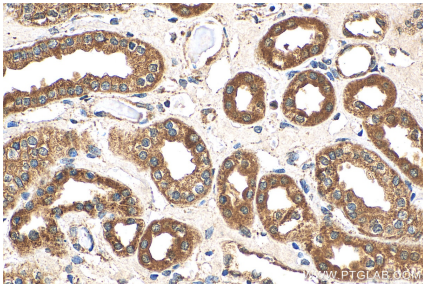
Various lysates were subjected to SDS PAGE followed by western blot with 21175-1-AP (LRPPRC antibody) at dilution of 1:30000 incubated at room temperature for 1.5 hours.



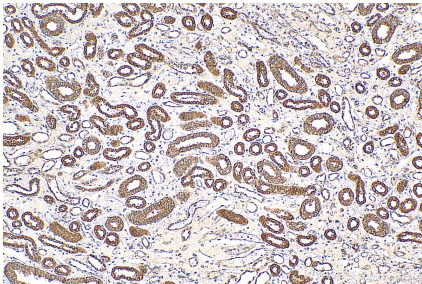
Immunofluorescent analysis of (4% PFA) fixed U2OS cells using 21175-1-AP (LRPPRC antibody), at dilution of 1:400 and CoraLite®488-Conjugated Goat Anti-Rabbit IgG(H+L). F-actin is stained using CL555-phalloidin (red) and DNA is stained by DAPI (blue).



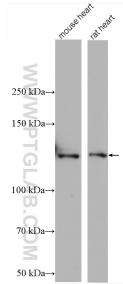
Immunohistochemical analysis of paraffin-embedded human normal colon slide using 21175-1-AP (LRPPRC antibody) at dilution of 1:6000 (under 20x lens). Heat mediated antigen retrieval with Tris-EDTA buffer (pH 9.0).



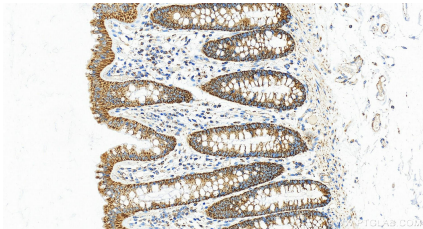
Immunohistochemical analysis of paraffin-embedded human kidney tissue slide using 21175-1-AP (LRPPRC antibody) at dilution of 1:200 (under 40x lens). Heat mediated antigen retrieval with Tris-EDTA buffer (pH 9.0).



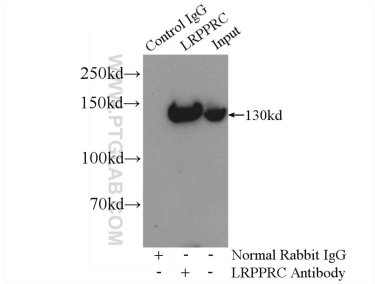
Immunohistochemical analysis of paraffin-embedded human kidney tissue slide using 21175-1-AP (LRPPRC antibody) at dilution of 1:200 (under 10x lens). Heat mediated antigen retrieval with Tris-EDTA buffer (pH 9.0).



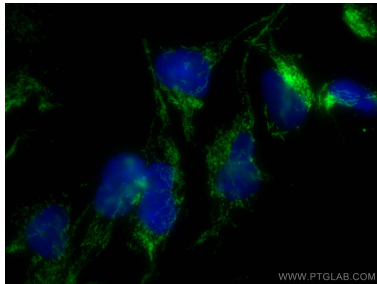
Various lysates were subjected to SDS PAGE followed by western blot with 21175-1-AP (LRPPRC antibody) at dilution of 1:8000 incubated at room temperature for 1.5 hours.



Immunohistochemical analysis of paraffin-embedded human normal colon slide using 21175-1-AP (LRPPRC antibody) at dilution of 1:6000 (under 20x lens). Heat mediated antigen retrieval with Tris-EDTA buffer (pH 9.0).



IP result of anti-LRPPRC (IP:21175-1-AP, 5ug; Detection:21175-1-AP 1:1000) with HeLa cells lysate 1200ug.



Immunofluorescent analysis of (4% PFA) fixed HEK-293 cells using LRPPRC antibody (21175-1-AP) at dilution of 1:400 and CoraLite®488-Conjugated Goat Anti-Rabbit IgG(H+L).