

For Research Use Only

# Kiz Polyclonal antibody

Catalog Number: 21177-1-AP **2 Publications**



## Basic Information

<b>Catalog Number:</b> 21177-1-AP	<b>GenBank Accession Number:</b> BC045826	<b>Purification Method:</b> Antigen affinity purification
<b>Size:</b> 150ul , Concentration: 800 ug/ml by Nanodrop and 513 ug/ml by Bradford method using BSA as the standard;	<b>GeneID (NCBI):</b> 55857	<b>Recommended Dilutions:</b> WB 1:500-1:3000
<b>Source:</b> Rabbit	<b>UNIPROT ID:</b> Q2M2Z5	IP 0.5-4.0 ug for 1.0-3.0 mg of total protein lysate
<b>Isotype:</b> IgG	<b>Full Name:</b> non-protein coding RNA 153	IHC 1:20-1:200
<b>Immunogen Catalog Number:</b> AG15454	<b>Calculated MW:</b> 673 aa, 75 kDa	IF/ICC 1:500-1:2000
	<b>Observed MW:</b> 90-100 kDa	

## Applications

<b>Tested Applications:</b> WB, IHC, IF/ICC, IP, ELISA	<b>Positive Controls:</b>
<b>Cited Applications:</b> IF	<b>WB :</b> HeLa cells, human brain tissue
<b>Species Specificity:</b> human	<b>IP :</b> HeLa cells,
<b>Cited Species:</b> human, mouse	<b>IHC :</b> human testis tissue,
<b>Note-IHC:</b> suggested antigen retrieval with <b>TE buffer pH 9.0; (*) Alternatively, antigen retrieval may be performed with citrate buffer pH 6.0</b>	<b>IF/ICC :</b> HeLa cells, hTERT-RPE1 cells

## Notable Publications

Author	Pubmed ID	Journal	Application
Tianyu Wu	36395215	Science	IF
Chun So	31249032	Science	IF

## Storage

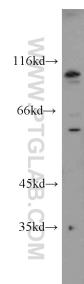
**Storage:**  
Store at -20°C. Stable for one year after shipment.  
**Storage Buffer:**  
PBS with 0.02% sodium azide and 50% glycerol pH 7.3.  
Aliquoting is unnecessary for -20°C storage

\*\*\* 20ul sizes contain 0.1% BSA

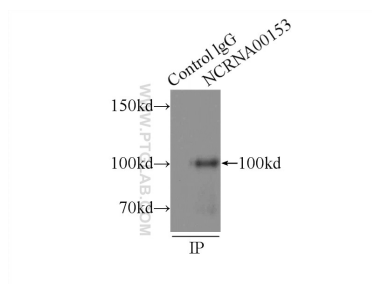
For technical support and original validation data for this product please contact:  
T: 1 (888) 4PTGLAB (1-888-478-4522) (toll free in USA), or 1(312) 455-8498 (outside USA)  
E: [proteintech@ptglab.com](mailto:proteintech@ptglab.com)  
W: [ptglab.com](http://ptglab.com)

This product is exclusively available under Proteintech Group brand and is not available to purchase from any other manufacturer.

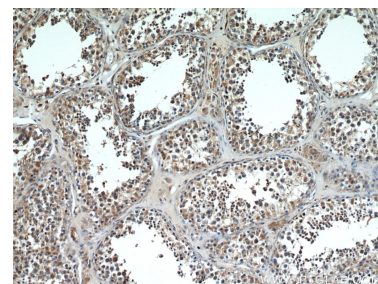
## Selected Validation Data



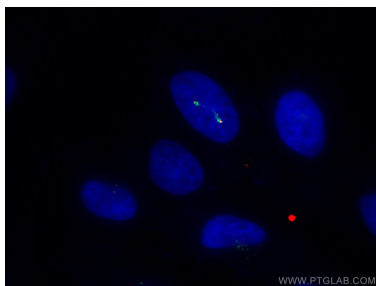
HeLa cells were subjected to SDS PAGE followed by western blot with 21177-1-AP (C20orf19 antibody) at dilution of 1:1000 incubated at room temperature for 1.5 hours.



IP result of anti-Kiz (IP:21177-1-AP, 3ug; Detection:21177-1-AP 1:500) with HeLa cells lysate 2000ug.



Immunohistochemical analysis of paraffin-embedded human testis using 21177-1-AP (C20orf19 antibody) at dilution of 1:100 (under 10x lens).



Immunofluorescent analysis of (4% PFA) fixed HeLa cells using Kiz antibody (21177-1-AP) at dilution of 1:1000 and CoraLite®488-Conjugated AffiniPure Goat Anti-Rabbit IgG(H+L), Gamma Tubulin antibody (66320-1-Ig, Clone: 3F9H8, red).