

For Research Use Only

CBLL1 Polyclonal antibody

Catalog Number: 21179-1-AP

Featured Product

10 Publications



Basic Information

Catalog Number:

21179-1-AP

Size:

150ul, Concentration: 800 ug/ml by Nanodrop;

Source:

Rabbit

Isotype:

IgG

Immunogen Catalog Number:

AG15463

GenBank Accession Number:

BC027460

GeneID (NCBI):

79872

UNIPROT ID:

Q75N03

Full Name:

Cas-Br-M (murine) ecotropic retroviral transforming sequence-like 1

Calculated MW:

491 aa, 55 kDa

Observed MW:

55-60 kDa

Purification Method:

Antigen affinity purification

Recommended Dilutions:

WB 1:1000-1:6000

IHC 1:50-1:500

IF/ICC 1:200-1:800

Applications

Tested Applications:

WB, IHC, IF/ICC, ELISA

Cited Applications:

WB, IHC, IF

Species Specificity:

human, mouse

Cited Species:

human, mouse

Positive Controls:

WB : HEK-293 cells, HeLa cells, MCF-7 cells

IHC : human colon cancer tissue, human lung cancer tissue

IF/ICC : HepG2 cells,

Note-IHC: suggested antigen retrieval with TE buffer pH 9.0; (*) Alternatively, antigen retrieval may be performed with citrate buffer pH 6.0

Background Information

Cbl proto-oncogene E3 ubiquitin protein ligase-like 1, RNF188, Hakai (CBLL1) is an evolutionarily conserved E3 ubiquitin ligase containing a RING-finger domain. CBLL1 contains a typical RING-finger, short pTyr-binding domain, and proline-rich domain. CBLL1 expression is upregulated in human colon and gastric cancer tissues, and CBLL1 has been reported to induce anchorage-dependent cell growth. CBLL1 immunostaining was observed in both the nuclei and cytoplasm of cancer cells. (PMID: 31124298, PMID: 31646569, PMID: 21191016)

Notable Publications

Author	Pubmed ID	Journal	Application
Kyoko Sako-Kubota	25253721	Mol Biol Cell	WB
Zi Liu	36071249	Med Oncol	WB
Chunmei Hu	34764728	J Ginseng Res	IF

Storage

Storage:

Store at -20°C. Stable for one year after shipment.

Storage Buffer:

PBS with 0.02% sodium azide and 50% glycerol pH 7.3.

Aliquoting is unnecessary for -20°C storage

*** 20ul sizes contain 0.1% BSA

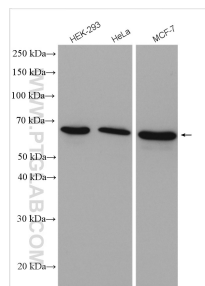
For technical support and original validation data for this product please contact:

T: 1 (888) 4PTGLAB (1-888-478-4522) (toll free in USA), or 1(312) 455-8498 (outside USA)

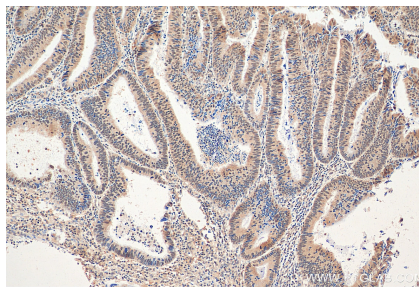
E: proteintech@ptglab.com
W: ptglab.com

This product is exclusively available under Proteintech Group brand and is not available to purchase from any other manufacturer.

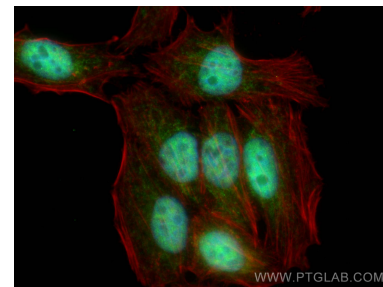
Selected Validation Data



Various lysates were subjected to SDS PAGE followed by western blot with 21179-1-AP (CBL1 antibody) at dilution of 1:3000 incubated at room temperature for 1.5 hours.



Immunohistochemical analysis of paraffin-embedded human colon cancer tissue slide using 21179-1-AP (CBL1 antibody) at dilution of 1:200 (under 10x lens). Heat mediated antigen retrieval with Tris-EDTA buffer (pH 9.0).



Immunofluorescent analysis of (4% PFA) fixed HepG2 cells using CBL1 antibody (21179-1-AP) at dilution of 1:400 and CoraLite®488-Conjugated Goat Anti-Rabbit IgG(H+L), CL594-Phalloidin (red).