

For Research Use Only

# S1PR2 Polyclonal antibody

Catalog Number: 21180-1-AP

Featured Product

43 Publications



## Basic Information

<b>Catalog Number:</b> 21180-1-AP	<b>GenBank Accession Number:</b> BC069598	<b>Purification Method:</b> Antigen affinity purification
<b>Size:</b> 150ul , Concentration: 550 µg/ml by Nanodrop;	<b>GeneID (NCBI):</b> 9294	<b>Recommended Dilutions:</b> WB 1:500-1:1000 IF 1:200-1:800
<b>Source:</b> Rabbit	<b>Full Name:</b> sphingosine-1-phosphate receptor 2	
<b>Isotype:</b> IgG	<b>Calculated MW:</b> 353 aa, 39 kDa	
<b>Immunogen Catalog Number:</b> AG15470	<b>Observed MW:</b> 40-50 kDa	

## Applications

<b>Tested Applications:</b> IF, WB, ELISA	<b>Positive Controls:</b> WB : HeLa cells, Daudi cells, MCF-7 cells IF : mouse brain tissue,
<b>Cited Applications:</b> IF, IHC, IP, WB	
<b>Species Specificity:</b> human, mouse, rat	
<b>Cited Species:</b> human, rat, mouse	

## Background Information

S1PR2 (sphingosine-1-phosphate receptor 2), also known as S1P2 or EDG5, is one of five G-protein-coupled receptors for sphingosine-1-phosphate (S1P), a biologically active metabolic product of sphingolipid (PMID: 18787560). S1P and its receptors have important regulatory functions in normal physiology and disease processes, particularly involving the immune, central nervous, and cardiovascular systems (PMID: 21339489). S1PR2 plays a role in acute vascular inflammation (PMID: 23723450). S1PR2 signaling is implicated in STAT3 activation (PMID: 22606352).

## Notable Publications

Author	Pubmed ID	Journal	Application
Yonggui Song	33007392	J Ethnopharmacol	WB
Gennaro Bruno	31477835	Oncogene	WB
K Liu	31610097	Andrology	WB,IHC,IF

## Storage

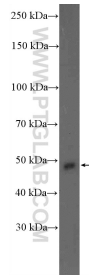
**Storage:**  
Store at -20°C. Stable for one year after shipment.  
**Storage Buffer:**  
PBS with 0.02% sodium azide and 50% glycerol pH 7.3.  
Aliquoting is unnecessary for -20°C storage

\*\*\* 20ul sizes contain 0.1% BSA

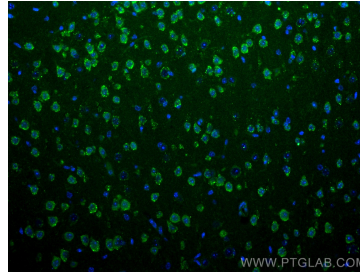
For technical support and original validation data for this product please contact:  
T: 1 (888) 4PTGLAB (1-888-478-4522) (toll free in USA), or 1(312) 455-8498 (outside USA)  
E: proteintech@ptglab.com  
W: ptglab.com

This product is exclusively available under Proteintech Group brand and is not available to purchase from any other manufacturer.

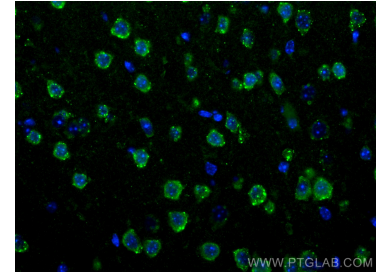
## Selected Validation Data



HeLa cells were subjected to SDS PAGE followed by western blot with 21180-1-AP (S1PR2 Antibody) at dilution of 1:600 incubated at room temperature for 1.5 hours.



Immunofluorescent analysis of (4% PFA) fixed mouse brain tissue using S1PR2 antibody (21180-1-AP) at dilution of 1:400 and CoraLite® 488-Conjugated AffiniPure Goat Anti-Rabbit IgG(H+L).



Immunofluorescent analysis of (4% PFA) fixed mouse brain tissue using S1PR2 antibody (21180-1-AP) at dilution of 1:400 and CoraLite® 488-Conjugated AffiniPure Goat Anti-Rabbit IgG(H+L).