

For Research Use Only

# ARHGEF39 Polyclonal antibody

Catalog Number: 21182-1-AP



## Basic Information

<b>Catalog Number:</b> 21182-1-AP	<b>GenBank Accession Number:</b> BC033666	<b>Purification Method:</b> Antigen affinity purification
<b>Size:</b> 150ul , Concentration: 1300 ug/ml by Nanodrop;	<b>GeneID (NCBI):</b> 84904	<b>Recommended Dilutions:</b> WB 1:1000-1:8000
<b>Source:</b> Rabbit	<b>UNIPROT ID:</b> Q8N4T4	
<b>Isotype:</b> IgG	<b>Full Name:</b> chromosome 9 open reading frame 100	
<b>Immunogen Catalog Number:</b> AG15473	<b>Calculated MW:</b> 335 aa, 38 kDa	
	<b>Observed MW:</b> 34 kDa	

## Applications

<b>Tested Applications:</b> WB, ELISA	<b>Positive Controls:</b>
<b>Species Specificity:</b> human	<b>WB :</b> HeLa cells, HepG2 cells, Jurkat cells, K-562 cells, SMMC-7721

## Background Information

Rho guanine nucleotide exchange factor 39 (ARHGEF39), also called C9orf100, is part of the family of Rho guanine nucleotide exchange factors (RhoGEFs) that activate small Rho GTPases to regulate a wide variety of cellular processes. ARHGEF39 was previously implicated in developmental language disorder (DLD) via a functional polymorphism that can disrupt post-transcriptional regulation by microRNAs.

## Storage

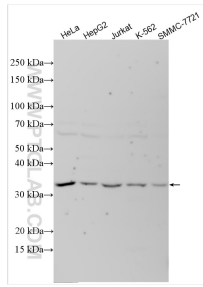
**Storage:**  
Store at -20°C. Stable for one year after shipment.  
**Storage Buffer:**  
PBS with 0.02% sodium azide and 50% glycerol pH 7.3.  
Aliquoting is unnecessary for -20°C storage

\*\*\* 20ul sizes contain 0.1% BSA

For technical support and original validation data for this product please contact:  
T: 1 (888) 4PTGLAB (1-888-478-4522) (toll free in USA), or 1(312) 455-8498 (outside USA)  
E: [proteintech@ptglab.com](mailto:proteintech@ptglab.com)  
W: [ptglab.com](http://ptglab.com)

This product is exclusively available under Proteintech Group brand and is not available to purchase from any other manufacturer.

## Selected Validation Data



Various lysates were subjected to SDS PAGE followed by western blot with 21182-1-AP (ARHGEF39 antibody) at dilution of 1:4000 incubated at room temperature for 1.5 hours.