

For Research Use Only

C13orf18 Polyclonal antibody

Catalog Number: 21183-1-AP

2 Publications



Basic Information

Catalog Number: 21183-1-AP	GenBank Accession Number: BC032311	Purification Method: Antigen affinity purification
Size: 150ul , Concentration: 700 µg/ml by Nanodrop and 480 µg/ml by Bradford method using BSA as the standard;	GeneID (NCBI): 80183	Recommended Dilutions: WB 1:500-1:2000 IHC 1:20-1:200 IF 1:10-1:100
Source: Rabbit	Full Name: chromosome 13 open reading frame 18	
Isotype: IgG	Calculated MW: 662 aa, 73 kDa	
Immunogen Catalog Number: AG15474	Observed MW: 66 kDa	

Applications

Tested Applications: IF, IHC, WB, ELISA	Positive Controls: WB : human skeletal muscle tissue, MCF-7 cells IHC : human testis tissue, human colon tissue IF : HepG2 cells,
Cited Applications: WB	
Species Specificity: human	
Cited Species: human	
Note-IHC: suggested antigen retrieval with TE buffer pH 9.0; (*) Alternatively, antigen retrieval may be performed with citrate buffer pH 6.0	

Background Information

Notable Publications

Author	Pubmed ID	Journal	Application
Edward L Huttlin	28514442	Nature	WB
Fengqin Zhu	37941642	Precis Clin Med	WB

Storage

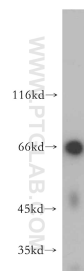
Storage:
Store at -20°C. Stable for one year after shipment.
Storage Buffer:
PBS with 0.02% sodium azide and 50% glycerol pH 7.3.
Aliquoting is unnecessary for -20°C storage

*** 20ul sizes contain 0.1% BSA

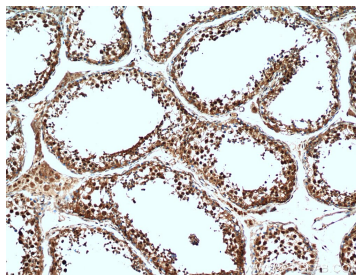
For technical support and original validation data for this product please contact:
T: 1 (888) 4PTGLAB (1-888-478-4522) (toll free in USA), or 1(312) 455-8498 (outside USA)
E: proteintech@ptglab.com
W: ptglab.com

This product is exclusively available under Proteintech Group brand and is not available to purchase from any other manufacturer.

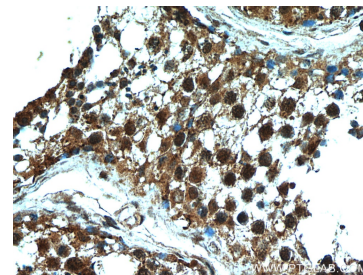
Selected Validation Data



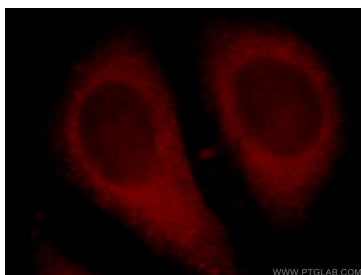
human skeletal muscle tissue were subjected to SDS PAGE followed by western blot with 21183-1-AP (C13orf18 antibody) at dilution of 1:500 incubated at room temperature for 1.5 hours.



Immunohistochemical analysis of paraffin-embedded human testis using 21183-1-AP (C13orf18 antibody) at dilution of 1:50 (under 10x lens).



Immunohistochemical analysis of paraffin-embedded human testis using 21183-1-AP (C13orf18 antibody) at dilution of 1:50 (under 40x lens).



Immunofluorescent analysis of HepG2 cells, using C13orf18 antibody 21183-1-AP at 1:25 dilution and Rhodamine-labeled goat anti-rabbit IgG (red).