

For Research Use Only

BCL6 Polyclonal antibody

Catalog Number: 21187-1-AP

Featured Product

20 Publications



Basic Information

Catalog Number:

21187-1-AP

Size:

150ul, Concentration: 600 ug/ml by Nanodrop;

Source:

Rabbit

Isotype:

IgG

Immunogen Catalog Number:

AG15519

GenBank Accession Number:

BC150184

GeneID (NCBI):

604

UNIPROT ID:

P41182

Full Name:

B-cell CLL/lymphoma 6

Calculated MW:

706 aa, 79 kDa

Observed MW:

79-95 kDa

Purification Method:

Antigen affinity purification

Recommended Dilutions:

WB: 1:500-1:3000

IP: 0.5-4.0 ug for 1.0-3.0 mg of total protein lysate

IHC: 1:3000-1:12000

Applications

Tested Applications:

WB, IHC, IP, ELISA

Cited Applications:

WB, IHC, IF, IP

Species Specificity:

human

Cited Species:

human, mouse, rat

Positive Controls:

WB: Raji cells,

IP: Raji cells,

IHC: human tonsillitis tissue, human lymphoma tissue

Note-IHC: suggested antigen retrieval with TE buffer pH 9.0; (*) Alternatively, antigen retrieval may be performed with citrate buffer pH 6.0

Background Information

BCL6, a zinc finger transcription factor, contains a N-terminal BTB/POZ domain and C-terminal zinc finger DNA-binding motifs and represses transcription of a wide range of target proteins and microRNAs. BCL6 protein has been reported as a master regulator of B lymphocyte development and growth, and altered BCL6 protein expression was implicated in pathogenesis of diverse human hematologic malignancies, especially in the diffuse large B cell lymphoma (DLBCL). BCL6 is required for the development of T follicular helper T cells (TFH), a helper T cell subset required for the formation of mature and productive GCs. BCL6 has also been shown to play important regulatory roles in macrophages.

Notable Publications

Author	Pubmed ID	Journal	Application
Ranran Sun	33008587	Biochem Biophys Res Commun	WB
Shuang Zhang	34558634	Mol Med Rep	WB
Lai Chen	33191180	Int Immunopharmacol	WB

Storage

Storage:

Store at -20°C. Stable for one year after shipment.

Storage Buffer:

PBS with 0.02% sodium azide and 50% glycerol, pH7.3

Aliquoting is unnecessary for -20°C storage

*** 20ul sizes contain 0.1% BSA

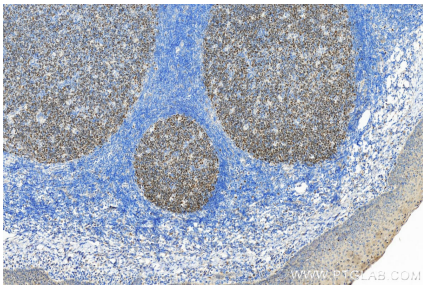
For technical support and original validation data for this product please contact:

T: 1 (888) 4PTGLAB (1-888-478-4522) (toll free in USA), or 1(312) 455-8498 (outside USA)

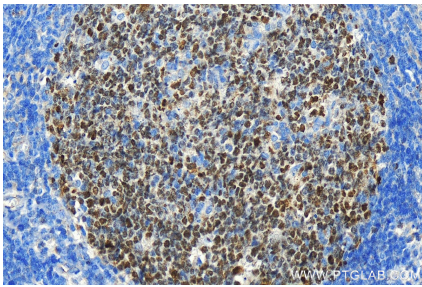
E: proteintech@ptglab.com
W: ptglab.com

This product is exclusively available under Proteintech Group brand and is not available to purchase from any other manufacturer.

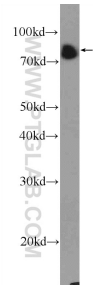
Selected Validation Data



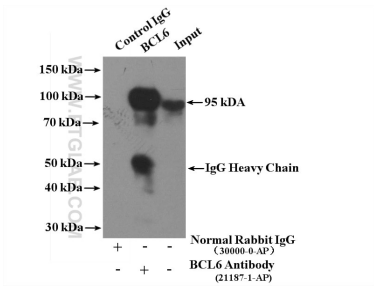
Immunohistochemical analysis of paraffin-embedded human tonsillitis tissue slide using 21187-1-AP (BCL6 antibody) at dilution of 1:6000 (under 20x lens). Heat mediated antigen retrieval with Tris-EDTA buffer (pH 9.0).



Immunohistochemical analysis of paraffin-embedded human tonsillitis tissue slide using 21187-1-AP (BCL6 antibody) at dilution of 1:6000 (under 20x lens). Heat mediated antigen retrieval with Tris-EDTA buffer (pH 9.0).



Raji cells were subjected to SDS PAGE followed by western blot with 21187-1-AP (BCL6 Antibody) at dilution of 1:1500 incubated at room temperature for 1.5 hours.



IP result of anti-BCL6 (IP:21187-1-AP, 4ug; Detection:21187-1-AP 1:1000) with Raji cells lysate 1400ug.