

For Research Use Only

# KLHL4 Polyclonal antibody

Catalog Number: 21191-1-AP



## Basic Information

|  |  |  |
|--|--|--|
| <b>Catalog Number:</b><br>21191-1-AP   | <b>GenBank Accession Number:</b><br>BC142652   | <b>Purification Method:</b><br>Antigen affinity purification       |
| <b>Size:</b><br>150ul , Concentration: 400 ug/ml by Nanodrop and 307 ug/ml by Bradford method using BSA as the standard; | <b>GeneID (NCBI):</b><br>56062                 | <b>Recommended Dilutions:</b><br>WB 1:500-1:2000<br>IHC 1:20-1:200 |
| <b>Source:</b><br>Rabbit   | <b>UNIPROT ID:</b><br>Q9C0H6                   |  |
| <b>Isotype:</b><br>IgG   | <b>Full Name:</b><br>kelch-like 4 (Drosophila) |  |
| <b>Immunogen Catalog Number:</b><br>AG15529  | <b>Calculated MW:</b><br>720 aa, 81 kDa        |  |
|  | <b>Observed MW:</b><br>75-80 kDa               |  |

## Applications

|   |                                  |
|---|----------------------------------|
| <b>Tested Applications:</b><br>WB, IHC, ELISA   | <b>Positive Controls:</b>        |
| <b>Species Specificity:</b><br>human, mouse, rat  | <b>WB :</b> HeLa cells,          |
| <b>Note-IHC:</b> suggested antigen retrieval with <b>TE buffer pH 9.0; (*) Alternatively, antigen retrieval may be performed with citrate buffer pH 6.0</b> | <b>IHC :</b> human brain tissue, |

## Storage

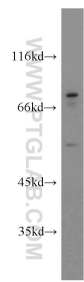
**Storage:**  
Store at -20°C. Stable for one year after shipment.  
**Storage Buffer:**  
PBS with 0.02% sodium azide and 50% glycerol pH 7.3.  
Aliquoting is unnecessary for -20°C storage

\*\*\* 20ul sizes contain 0.1% BSA

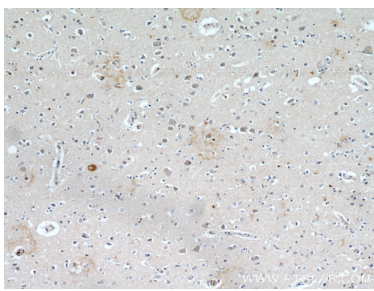
For technical support and original validation data for this product please contact:  
T: 1 (888) 4PTGLAB (1-888-478-4522) (toll free in USA), or 1(312) 455-8498 (outside USA)  
E: [proteintech@ptglab.com](mailto:proteintech@ptglab.com)  
W: [ptglab.com](http://ptglab.com)

This product is exclusively available under Proteintech Group brand and is not available to purchase from any other manufacturer.

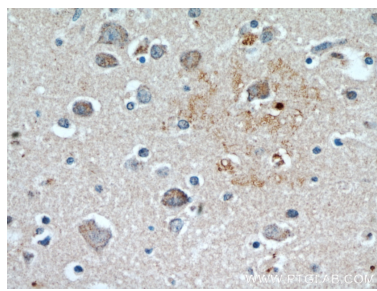
# Selected Validation Data



HeLa cells were subjected to SDS PAGE followed by western blot with 21191-1-AP (KLHL4 antibody) at dilution of 1:600 incubated at room temperature for 1.5 hours.



Immunohistochemical analysis of paraffin-embedded human brain using 21191-1-AP (KLHL4 antibody) at dilution of 1:50 (under 10x lens).



Immunohistochemical analysis of paraffin-embedded human brain using 21191-1-AP (KLHL4 antibody) at dilution of 1:50 (under 40x lens).