

For Research Use Only

STIM2 Polyclonal antibody

Catalog Number: 21192-1-AP

Featured Product

15 Publications



Basic Information

Catalog Number:

21192-1-AP

Size:

150ul, Concentration: 353 ug/ml by Bradford method using BSA as the standard;

Source:

Rabbit

Isotype:

IgG

Immunogen Catalog Number:

AG15530

GenBank Accession Number:

BC146661

GeneID (NCBI):

57620

UNIPROT ID:

Q9P246

Full Name:

stromal interaction molecule 2

Calculated MW:

754 aa, 85 kDa

Observed MW:

85-115 kDa

Purification Method:

Antigen affinity purification

Recommended Dilutions:

WB 1:500-1:3000

IP 0.5-4.0 ug for 1.0-3.0 mg of total protein lysate

IHC 1:50-1:500

Applications

Tested Applications:

WB, IP, IHC, ELISA

Cited Applications:

WB, IF, IP

Species Specificity:

human, mouse, rat

Cited Species:

human, mouse, rat

Note-IHC: suggested antigen retrieval with TE buffer pH 9.0; (*) Alternatively, antigen retrieval may be performed with citrate buffer pH 6.0

Positive Controls:

WB : HeLa cells, HEK-293 cells, Jurkat cells

IP : HEK-293 cells,

IHC : mouse spleen tissue, human brain tissue, human spleen tissue

Background Information

STIM2, also named as KIAA1482, functions as a highly sensitive Ca²⁺ sensor in the endoplasmic reticulum which activates both store-operated and store-independent Ca²⁺-influx. Regulates basal cytosolic and endoplasmic reticulum Ca²⁺ concentrations. Upon mild variations of the endoplasmic reticulum Ca²⁺ concentration, STIM2 translocates from the endoplasmic reticulum to the plasma membrane where it probably activates the Ca²⁺ release-activated Ca²⁺ (CRAC) channels ORAI1, ORAI2 and ORAI3. STIM2 may inhibit STIM1-mediated Ca²⁺ influx. STIM2 has 2 isoforms 105kd and 115kd with Differential levels of phosphorylation.

Notable Publications

Author	Pubmed ID	Journal	Application
Zhuo Chen	34686338	Cell Rep	IF
Siheng Zhang	28479254	Biochem Biophys Res Commun	WB
Girish Ramesh	33730587	Cell Rep	WB

Storage

Storage:

Store at -20°C. Stable for one year after shipment.

Storage Buffer:

PBS with 0.02% sodium azide and 50% glycerol pH 7.3.

Aliquoting is unnecessary for -20°C storage

*** 20ul sizes contain 0.1% BSA

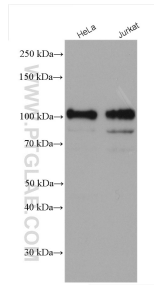
For technical support and original validation data for this product please contact:

T: 1 (888) 4PTGLAB (1-888-478-4522) (toll free in USA), or 1(312) 455-8498 (outside USA)

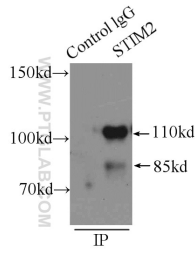
E: proteintech@ptglab.com
W: ptglab.com

This product is exclusively available under Proteintech Group brand and is not available to purchase from any other manufacturer.

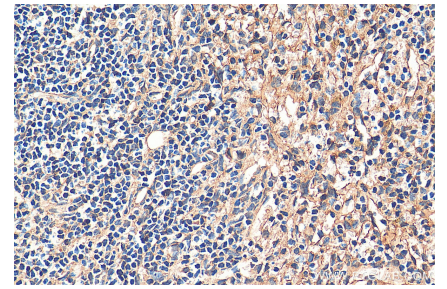
Selected Validation Data



Various lysates were subjected to SDS PAGE followed by western blot with 21192-1-AP (STIM2 antibody) at dilution of 1:1500 incubated at room temperature for 1.5 hours.



IP result of anti-STIM2 (IP:21192-1-AP, 3ug; Detection:21192-1-AP 1:500) with HEK-293 cells lysate 2000ug.



Immunohistochemical analysis of paraffin-embedded mouse spleen tissue slide using 21192-1-AP (STIM2 antibody) at dilution of 1:200 (under 40x lens). Heat mediated antigen retrieval with Tris-EDTA buffer (pH 9.0).