

For Research Use Only

PDE6A Polyclonal antibody

Catalog Number: 21200-1-AP

6 Publications



Basic Information

Catalog Number:

21200-1-AP

Size:

150ul, Concentration: 800 ug/ml by Nanodrop and 400 ug/ml by Bradford method using BSA as the standard;

Source:

Rabbit

Isotype:

IgG

Immunogen Catalog Number:

AG15562

GenBank Accession Number:

BC035909

GeneID (NCBI):

5145

UNIPROT ID:

P16499

Full Name:

phosphodiesterase 6A, cGMP-specific, rod, alpha

Calculated MW:

860 aa, 100 kDa

Observed MW:

100-110 kDa

Purification Method:

Antigen affinity purification

Recommended Dilutions:

WB 1:1000-1:6000

IHC 1:250-1:1000

IF 1:50-1:200

Applications

Tested Applications:

WB, IHC, IF, ELISA

Cited Applications:

WB, IHC, IF

Species Specificity:

human, mouse, rat

Cited Species:

mouse, rat

Note-IHC: suggested antigen retrieval with TE buffer pH 9.0; (*) Alternatively, antigen retrieval may be performed with citrate buffer pH 6.0

Positive Controls:

WB : mouse eye tissue, human brain tissue, rat eye tissue

IHC : mouse eye tissue, human colon cancer tissue, human ovary cancer tissue

IF : retinal tissue,

Background Information

PDE6A(Rod cGMP-specific 3',5'-cyclic phosphodiesterase subunit alpha) is also named as GMP-PDE alpha, PDE V-B1, PDEA and belongs to the cyclic nucleotide phosphodiesterase family. PDE6A contains an open reading frame capable of coding for a polypeptide of 859 amino acids and about 100 kDa. It is a subunit of a key phototransduction enzyme which participates in processes of transmission and amplification of the visual signal. The expression of PDE6 alpha in retina is essential for normal expression of PDE6 beta and PDE6 gamma.

Notable Publications

Author	Pubmed ID	Journal	Application
Poppy Datta	31694913	J Biol Chem	WB
Poppy Datta	26216965	Proc Natl Acad Sci U S A	WB, IF
Jeremy R Egbert	29341896	Dev Biol	WB

Storage

Storage:

Store at -20°C. Stable for one year after shipment.

Storage Buffer:

PBS with 0.02% sodium azide and 50% glycerol pH 7.3.

Aliquoting is unnecessary for -20°C storage

*** 20ul sizes contain 0.1% BSA

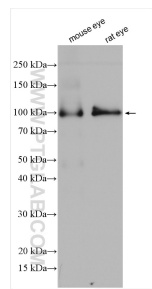
For technical support and original validation data for this product please contact:

T: 1 (888) 4PTGLAB (1-888-478-4522) (toll free in USA), or 1(312) 455-8498 (outside USA)

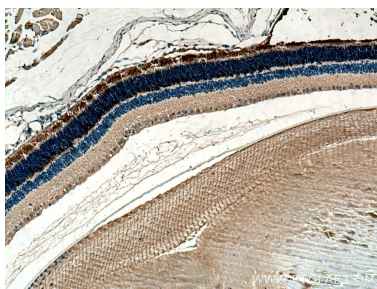
E: proteintech@ptglab.com
W: ptglab.com

This product is exclusively available under Proteintech Group brand and is not available to purchase from any other manufacturer.

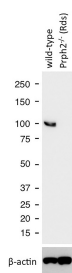
Selected Validation Data



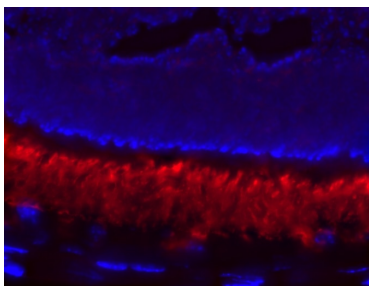
Various lysates were subjected to SDS PAGE followed by western blot with 21200-1-AP (PDE6A antibody) at dilution of 1:3000 incubated at room temperature for 1.5 hours.



Immunohistochemical analysis of paraffin-embedded mouse eye tissue slide using 21200-1-AP (PDE6A antibody) at dilution of 1:500 (under 10x lens). Heat mediated antigen retrieval with Tris-EDTA buffer (pH 9.0).



WB results of PDE6A antibody (21200-1-AP) with WT mouse Eye and Prph2 (Rds) mutant mouse Eye (Negative control). Courtesy of Seongjin Seo, PhD, University of Iowa College of Medicine.



IF stain of PDE6a antibody with retinal tissue by a customer. (PDE6a is in red and nuclei are blue).