

For Research Use Only

NUDCD2 Polyclonal antibody

Catalog Number: 21205-1-AP

Featured Product

1 Publications



Basic Information

Catalog Number:

21205-1-AP

Size:

150ul, Concentration: 450 ug/ml by Nanodrop and 267 ug/ml by Bradford method using BSA as the standard;

Source:

Rabbit

Isotype:

IgG

Immunogen Catalog Number:

AG15579

GenBank Accession Number:

BC017934

GeneID (NCBI):

134492

UNIPROT ID:

Q8WVJ2

Full Name:

NudC domain containing 2

Calculated MW:

157 aa, 18 kDa

Observed MW:

18 kDa

Purification Method:

Antigen affinity purification

Recommended Dilutions:

WB 1:2000-1:12000

IP 0.5-4.0 ug for 1.0-3.0 mg of total protein lysate

IHC 1:200-1:800

IF/ICC 1:200-1:800

Applications

Tested Applications:

WB, IHC, IF/ICC, IP, ELISA

Cited Applications:

WB

Species Specificity:

human, mouse, rat

Cited Species:

mouse

Note-IHC: suggested antigen retrieval with TE buffer pH 9.0; (*) Alternatively, antigen retrieval may be performed with citrate buffer pH 6.0

Positive Controls:

WB: HepG2 cells, HEK-293 cells, human brain tissue, human kidney tissue, mouse brain tissue, rat brain tissue

IP: HepG2 cells,

IHC: human kidney tissue, human breast cancer tissue

IF/ICC: HepG2 cells, HeLa cells

Background Information

NUDCD2, also known as NudCL2, is an HSP90 cochaperone that regulates sister chromatid cohesion during mitosis. NUDCD2 also plays a role in ciliogenesis (PMID: 30368549, 34480124). NUDCD2 regulates the LIS1/dynein pathway by stabilizing LIS1 with Hsp90 chaperone (PMID: 20133715).

Notable Publications

Author	Pubmed ID	Journal	Application
Wanzhi Cai	39172275	Cell Mol Life Sci	WB

Storage

Storage:

Store at -20°C. Stable for one year after shipment.

Storage Buffer:

PBS with 0.02% sodium azide and 50% glycerol pH 7.3.

Aliquoting is unnecessary for -20°C storage

*** 20ul sizes contain 0.1% BSA

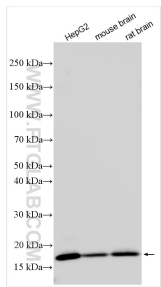
For technical support and original validation data for this product please contact:

T: 1 (888) 4PTGLAB (1-888-478-4522) (toll free in USA), or 1(312) 455-8498 (outside USA)

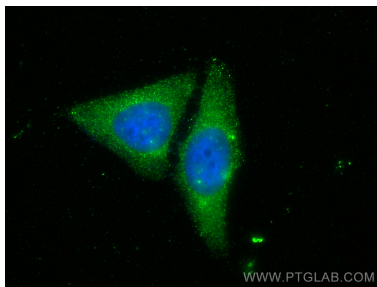
E: proteintech@ptglab.com
W: ptglab.com

This product is exclusively available under Proteintech Group brand and is not available to purchase from any other manufacturer.

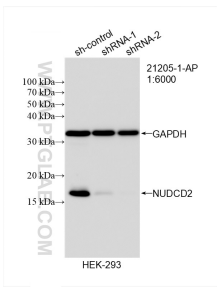
Selected Validation Data



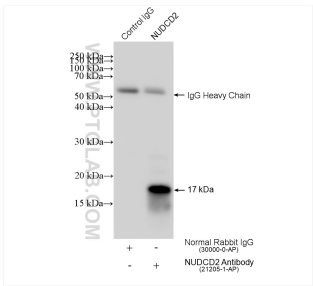
Various lysates were subjected to SDS PAGE followed by western blot with 21205-1-AP (NUDCD2 antibody) at dilution of 1:6000 incubated at room temperature for 1.5 hours.



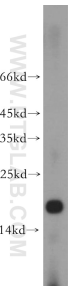
Immunofluorescent analysis of (-20°C Ethanol) fixed HepG2 cells using NUDCD2 antibody (21205-1-AP) at dilution of 1:400 and CoraLite®488-Conjugated AffiniPure Goat Anti-Rabbit IgG(H+L).



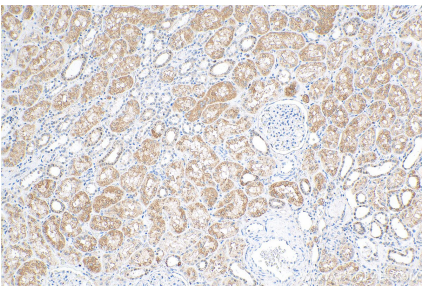
WB result of NUDCD2 antibody (21205-1-AP; 1:6000; incubated at room temperature for 1.5 hours) with sh-Control and sh-NUDCD2 transfected HEK-293 cells.



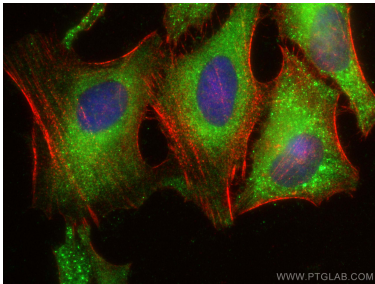
IP result of anti-NUDCD2 (IP:21205-1-AP, 4ug; Detection:21205-1-AP 1:500) with HepG2 cells lysate 1080 ug.



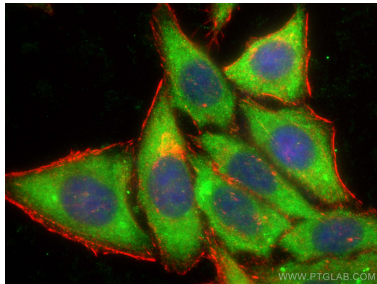
human brain tissue were subjected to SDS PAGE followed by western blot with 21205-1-AP (NUDCD2 antibody) at dilution of 1:500 incubated at room temperature for 1.5 hours.



Immunohistochemical analysis of paraffin-embedded human kidney tissue slide using 21205-1-AP (NUDCD2 antibody) at dilution of 1:400 (under 10x lens). Heat mediated antigen retrieval with Tris-EDTA buffer (pH 9.0).



Immunofluorescent analysis of (-20°C Ethanol) fixed HeLa cells using NUDCD2 antibody (21205-1-AP) at dilution of 1:400 and CoraLite®488-Conjugated AffiniPure Goat Anti-Rabbit IgG(H+L), CL594-phalloidin (red).



Immunofluorescent analysis of (-20°C Ethanol) fixed HepG2 cells using NUDCD2 antibody (21205-1-AP) at dilution of 1:400 and CoraLite®488-Conjugated AffiniPure Goat Anti-Rabbit IgG(H+L), CL594-phalloidin (red).