

For Research Use Only

CCDC25 Polyclonal antibody

Catalog Number: 21209-1-AP

Featured Product

10 Publications



Basic Information

Catalog Number:

21209-1-AP

Size:

150ul, Concentration: 900 ug/ml by Nanodrop and 447 ug/ml by Bradford method using BSA as the standard;

Source:

Rabbit

Isotype:

IgG

Immunogen Catalog Number:

AG15593

GenBank Accession Number:

BC032588

GeneID (NCBI):

55246

UNIPROT ID:

Q86WRO

Full Name:

coiled-coil domain containing 25

Calculated MW:

208 aa, 24 kDa

Observed MW:

24-26 kDa

Purification Method:

Antigen affinity purification

Recommended Dilutions:

WB 1:500-1:3000

IHC 1:50-1:500

Applications

Tested Applications:

WB, IHC, ELISA

Cited Applications:

WB, IHC, IF, IP

Species Specificity:

human

Cited Species:

human, mouse

Note-IHC: suggested antigen retrieval with TE buffer pH 9.0; (*) Alternatively, antigen retrieval may be performed with citrate buffer pH 6.0

Positive Controls:

WB : A549 cells, HeLa cells, Jurkat cells, K-562 cells, MCF-7 cells

IHC : human stomach tissue,

Notable Publications

Author	Pubmed ID	Journal	Application
Yiwen Lu	34616019	Nat Cell Biol	WB,IF
Linbin Yang	32528174	Nature	IF, WB
Ziqiang Chu	39522234	Biochem Biophys Res Commun	WB

Storage

Storage:

Store at -20°C. Stable for one year after shipment.

Storage Buffer:

PBS with 0.02% sodium azide and 50% glycerol pH 7.3.

Aliquoting is unnecessary for -20°C storage

*** 20ul sizes contain 0.1% BSA

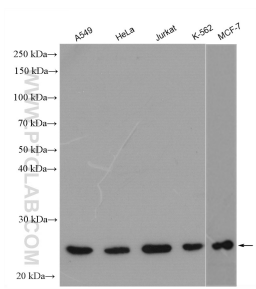
For technical support and original validation data for this product please contact:

T: 1 (888) 4PTGLAB (1-888-478-4522) (toll free in USA), or 1(312) 455-8498 (outside USA)

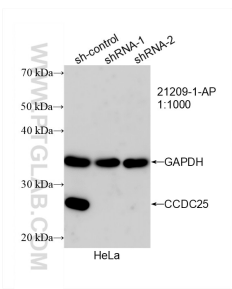
E: proteintech@ptglab.com
W: ptglab.com

This product is exclusively available under Proteintech Group brand and is not available to purchase from any other manufacturer.

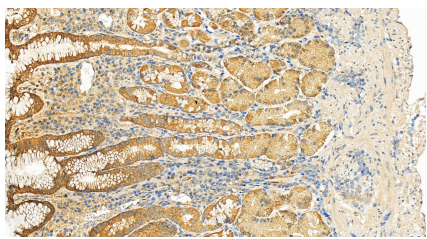
Selected Validation Data



Various lysates were subjected to SDS PAGE followed by western blot with 21209-1-AP (CCDC25 antibody) at dilution of 1:1500 incubated at room temperature for 1.5 hours.



WB result of CCDC25 antibody (21209-1-AP; 1:1000; incubated at room temperature for 1.5 hours) with sh-Control and sh-CCDC25 transfected HeLa cells.



Immunohistochemical analysis of paraffin-embedded human stomach tissue slide using 21209-1-AP (CCDC25 antibody) at dilution of 1:200 (under 20x lens). Heat mediated antigen retrieval with Tris-EDTA buffer (pH 9.0).