

For Research Use Only

SFRS2 Polyclonal antibody

Catalog Number: 21212-1-AP



Basic Information

Catalog Number:

21212-1-AP

Size:

150ul, Concentration: 200 ug/ml by Nanodrop;

Source:

Rabbit

Isotype:

IgG

Immunogen Catalog Number:

AG15612

GenBank Accession Number:

BC070086

GeneID (NCBI):

6427

UNIPROT ID:

Q01130

Full Name:

splicing factor, arginine/serine-rich 2

Calculated MW:

221 aa, 25 kDa

Observed MW:

30-35 kDa

Purification Method:

Antigen affinity purification

Recommended Dilutions:

WB 1:500-1:2000

Applications

Tested Applications:

WB, ELISA

Species Specificity:

human

Positive Controls:

WB : A549 cells, HEK-293 cells, HeLa cells, K-562 cells

Background Information

SFRS2, also named as PR264 and SC-35, belongs to the splicing factor SR family. SFRS2 is necessary for the splicing of pre-mRNA. It is required for formation of the earliest ATP-dependent splicing complex and interacts with spliceosomal components bound to both the 5'- and 3'-splice sites during spliceosome assembly. It also is required for ATP-dependent interactions of both U1 and U2 snRNPs with pre-mRNA. It binds to purine-rich RNA sequences, either 5'-AGSAGAGTA-3' (S=C or G) or 5'-GTTTCGAGTA-3'. SFRS2 can bind to beta-globin mRNA and commit it to the splicing pathway. The antibody has no cross reaction to SFRS2B.

Storage

Storage:

Store at -20°C. Stable for one year after shipment.

Storage Buffer:

PBS with 0.02% sodium azide and 50% glycerol pH 7.3.

Aliquoting is unnecessary for -20°C storage

*** 20ul sizes contain 0.1% BSA

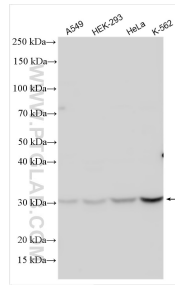
For technical support and original validation data for this product please contact:

T: 1 (888) 4PTGLAB (1-888-478-4522) (toll free in USA), or 1(312) 455-8498 (outside USA)

E: proteintech@ptglab.com
W: ptglab.com

This product is exclusively available under Proteintech Group brand and is not available to purchase from any other manufacturer.

Selected Validation Data



Various lysates were subjected to SDS PAGE followed by western blot with 21212-1-AP (SFRS2 antibody) at dilution of 1:1000 incubated at room temperature for 1.5 hours.