

For Research Use Only

AAMP Polyclonal antibody

Catalog Number: 21220-1-AP

1 Publications



Basic Information

Catalog Number:

21220-1-AP

Size:

150ul, Concentration: 133 ug/ml by Nanodrop and 133 ug/ml by Bradford method using BSA as the standard;

Source:

Rabbit

Isotype:

IgG

Immunogen Catalog Number:

AG15655

GenBank Accession Number:

BC039866

GeneID (NCBI):

14

UNIPROT ID:

Q13685

Full Name:

angio-associated, migratory cell protein

Calculated MW:

434 aa, 47 kDa

Observed MW:

52-58 kDa

Purification Method:

Antigen affinity purification

Recommended Dilutions:

WB 1:1000-1:4000

IHC 1:50-1:500

IF/ICC 1:50-1:500

Applications

Tested Applications:

WB, IHC, IF/ICC, ELISA

Cited Applications:

WB, IF

Species Specificity:

human, mouse, rat

Cited Species:

rat

Note-IHC: suggested antigen retrieval with TE buffer pH 9.0; (*) Alternatively, antigen retrieval may be performed with citrate buffer pH 6.0

Positive Controls:

WB: HUVEC cells, human heart tissue, mouse kidney tissue, mouse lung tissue, MCF-7 cells

IHC: human liver cancer tissue, human hepatocirrhosis tissue

IF/ICC: MCF-7 cells,

Notable Publications

Author	Pubmed ID	Journal	Application
Xiaogao Wang	34093747	Exp Ther Med	WB,IF

Storage

Storage:

Store at -20°C. Stable for one year after shipment.

Storage Buffer:

PBS with 0.02% sodium azide and 50% glycerol pH 7.3.

Aliquoting is unnecessary for -20°C storage

*** 20ul sizes contain 0.1% BSA

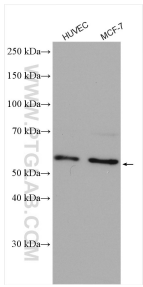
For technical support and original validation data for this product please contact:

T: 1 (888) 4PTGLAB (1-888-478-4522) (toll free in USA), or 1(312) 455-8498 (outside USA)

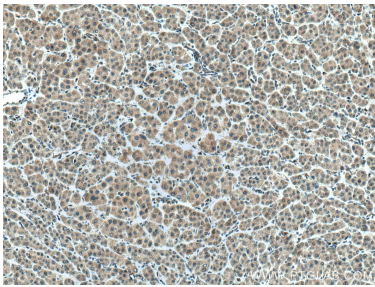
E: proteintech@ptglab.com
W: ptglab.com

This product is exclusively available under Proteintech Group brand and is not available to purchase from any other manufacturer.

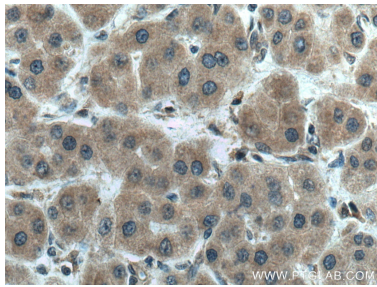
Selected Validation Data



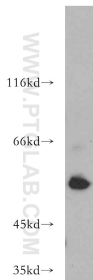
Various lysates were subjected to SDS PAGE followed by western blot with 21220-1-AP (AAMP antibody) at dilution of 1:2000 incubated at room temperature for 1.5 hours.



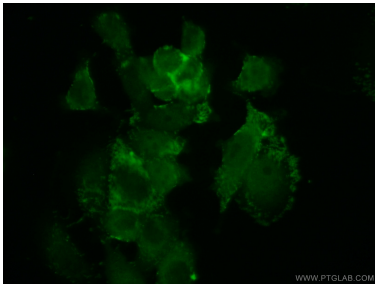
Immunohistochemical analysis of paraffin-embedded human liver cancer tissue slide using 21220-1-AP (AAMP antibody) at dilution of 1:200 (under 10x lens). Heat mediated antigen retrieval with Tris-EDTA buffer (pH 9.0).



Immunohistochemical analysis of paraffin-embedded human liver cancer tissue slide using 21220-1-AP (AAMP antibody) at dilution of 1:200 (under 40x lens). Heat mediated antigen retrieval with Tris-EDTA buffer (pH 9.0).



mouse lung tissue were subjected to SDS PAGE followed by western blot with 21220-1-AP (AAMP antibody) at dilution of 1:500 incubated at room temperature for 1.5 hours.



Immunofluorescent analysis of MCF-7 cells using 21220-1-AP (AAMP antibody) at dilution of 1:50 and Alexa Fluor 488-conjugated Goat Anti-Rabbit IgG(H+L).