

For Research Use Only

ZNF816 Polyclonal antibody, PBS Only

Catalog Number: 21221-1-PBS



Basic Information

Catalog Number: 21221-1-PBS	GenBank Accession Number: BC105930	Purification Method: Antigen affinity purification
Size: 100ug, Concentration: 1 mg/ml by Nanodrop;	GeneID (NCBI): 125893	
Source: Rabbit	UNIPROT ID: Q0VGE8	
Isotype: IgG	Full Name: zinc finger protein 816A	
Immunogen Catalog Number: AG15658	Calculated MW: 651 aa, 76 kDa	

Applications

Tested Applications:
IHC, IF/ICC, Indirect ELISA

Species Specificity:
human

Background Information

ZNF816 (Zinc finger protein 816), a direct target of ZBED4, was found to interact with multiple FDA-approved immunomodulatory agents, suggesting a potential ZBED4-ZNF816 regulatory axis with translational value.

Storage

Storage:
Store at -80°C.

Storage Buffer:
PBS only, pH7.3

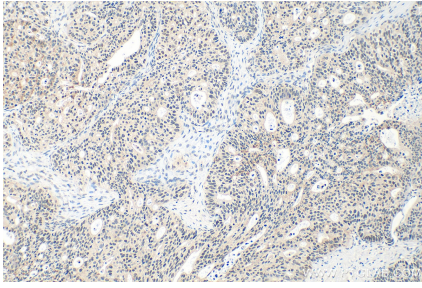
For technical support and original validation data for this product please contact:

T: 1 (888) 4PTGLAB (1-888-478-4522) (toll free
in USA), or 1(312) 455-8498 (outside USA)

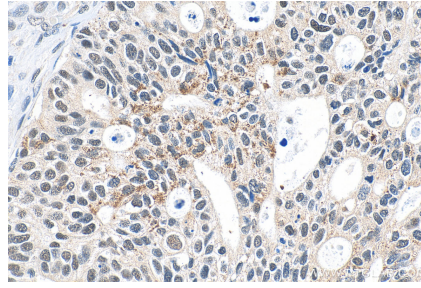
E: proteintech@ptglab.com
W: ptglab.com

This product is exclusively available under Proteintech Group brand and is not available to purchase from any other manufacturer.

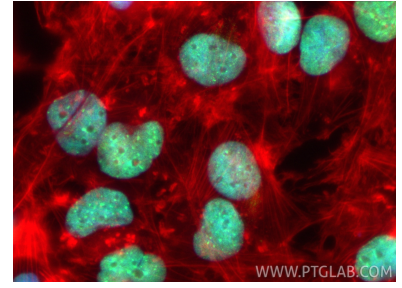
Selected Validation Data



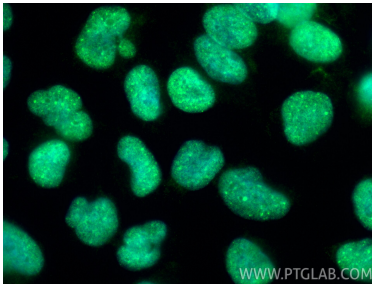
Immunohistochemical analysis of paraffin-embedded human ovary tumor tissue slide using 21221-1-AP (ZNF816A antibody) at dilution of 1:200 (under 10x lens). Heat mediated antigen retrieval with Tris-EDTA buffer (pH 9.0). This data was developed using the same antibody clone with 21221-1-PBS in a different storage buffer formulation.



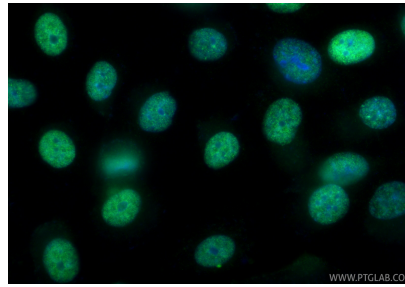
Immunohistochemical analysis of paraffin-embedded human ovary tumor tissue slide using 21221-1-AP (ZNF816A antibody) at dilution of 1:200 (under 40x lens). Heat mediated antigen retrieval with Tris-EDTA buffer (pH 9.0). This data was developed using the same antibody clone with 21221-1-PBS in a different storage buffer formulation.



Immunofluorescent analysis of (4% PFA) fixed U-251 cells using ZNF816A antibody (21221-1-AP) at dilution of 1:200 and CoraLite@488-Conjugated Goat Anti-Rabbit IgG(H+L) (SA00013-2), CL594-Phalloidin (red). This data was developed using the same antibody clone with 21221-1-PBS in a different storage buffer formulation.



Immunofluorescent analysis of (-20°C Ethanol) fixed U-251 cells using ZNF816A antibody (21221-1-AP) at dilution of 1:200 and CoraLite@488-Conjugated Goat Anti-Rabbit IgG(H+L) (SA00013-2). This data was developed using the same antibody clone with 21221-1-PBS in a different storage buffer formulation.



Immunofluorescent analysis of (-20°C Ethanol) fixed PC-3 cells using ZNF816A antibody (21221-1-AP) at dilution of 1:200 and CoraLite@488-Conjugated Goat Anti-Rabbit IgG(H+L) (SA00013-2). This data was developed using the same antibody clone with 21221-1-PBS in a different storage buffer formulation.