

For Research Use Only

CPLX4 Polyclonal antibody

Catalog Number: 21222-1-AP

Featured Product



Basic Information

Catalog Number:

21222-1-AP

Size:

150ul, Concentration: 1000 ug/ml by Nanodrop and 593 ug/ml by Bradford method using BSA as the standard;

Source:

Rabbit

Isotype:

IgG

Immunogen Catalog Number:

AG15661

GenBank Accession Number:

BC106887

GeneID (NCBI):

339302

UNIPROT ID:

Q7Z7G2

Full Name:

complexin 4

Calculated MW:

160 aa, 18 kDa

Observed MW:

21-23 kDa

Purification Method:

Antigen affinity purification

Recommended Dilutions:

WB 1:500-1:3000

IP 0.5-4.0 ug for 1.0-3.0 mg of total protein lysate

IHC 1:50-1:500

Applications

Tested Applications:

WB, IHC, IP, ELISA

Species Specificity:

human, mouse, rat

Note-IHC: suggested antigen retrieval with TE buffer pH 9.0; (*) Alternatively, antigen retrieval may be performed with citrate buffer pH 6.0

Positive Controls:

WB : Y79 cells,

IP : Y79 cells,

IHC : mouse eye tissue, human brain tissue, rat eye tissue

Storage

Storage:

Store at -20°C. Stable for one year after shipment.

Storage Buffer:

PBS with 0.02% sodium azide and 50% glycerol pH 7.3.

Aliquoting is unnecessary for -20°C storage

*** 20ul sizes contain 0.1% BSA

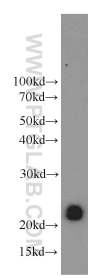
For technical support and original validation data for this product please contact:

T: 1 (888) 4PTGLAB (1-888-478-4522) (toll free in USA), or 1(312) 455-8498 (outside USA)

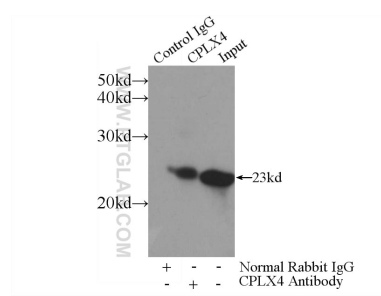
E: proteintech@ptglab.com
W: ptglab.com

This product is exclusively available under Proteintech Group brand and is not available to purchase from any other manufacturer.

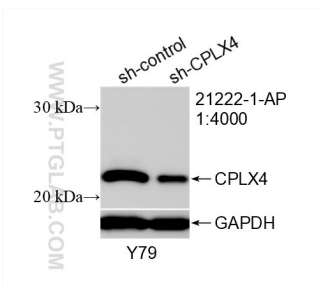
Selected Validation Data



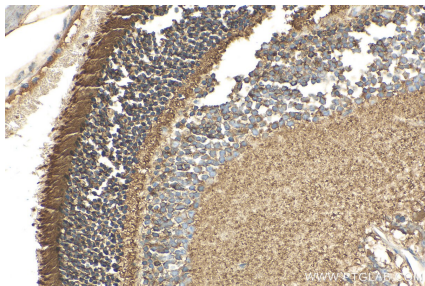
Y79 cells were subjected to SDS PAGE followed by western blot with 21222-1-AP (CPLX4 antibody) at dilution of 1:1500 incubated at room temperature for 1.5 hours.



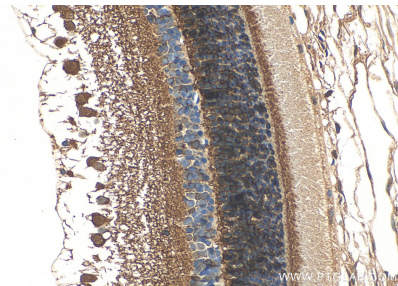
IP result of anti-CPLX4 (IP:21222-1-AP, 3ug; Detection:21222-1-AP 1:1000) with Y79 cells lysate 960ug.



WB result of CPLX4 antibody (21222-1-AP; 1:400; incubated at room temperature for 1.5 hours) with sh-Control and sh-CPLX4 transfected Y79 cells.



Immunohistochemical analysis of paraffin-embedded mouse eye tissue slide using 21222-1-AP (CPLX4 antibody) at dilution of 1:200 (under 40x lens). Heat mediated antigen retrieval with Tris-EDTA buffer (pH 9.0).



Immunohistochemical analysis of paraffin-embedded rat eye tissue slide using 21222-1-AP (CPLX4 antibody) at dilution of 1:200 (under 40x lens). Heat mediated antigen retrieval with Tris-EDTA buffer (pH 9.0).