

For Research Use Only

SCO2 Polyclonal antibody

Catalog Number: 21223-1-AP **10 Publications**



Basic Information

Catalog Number: 21223-1-AP	GenBank Accession Number: BC102025	Purification Method: Antigen affinity purification
Size: 150ul , Concentration: 400 µg/ml by Nanodrop and 253 µg/ml by Bradford method using BSA as the standard;	GeneID (NCBI): 9997	Recommended Dilutions: WB 1:500-1:3000 IHC 1:50-1:500 IF 1:50-1:500
Source: Rabbit	Full Name: SCO cytochrome oxidase deficient homolog 2 (yeast)	
Isotype: IgG	Calculated MW: 266 aa, 30 kDa	
Immunogen Catalog Number: AG15663	Observed MW: 27-30 kDa	

Applications

Tested Applications: IF, IHC, WB, ELISA	Positive Controls: WB : HEK-293 cells, HepG2 cells IHC : mouse skeletal muscle tissue, human hepatocirrhosis tissue, human heart tissue IF : mouse skeletal muscle tissue,
Cited Applications: IHC, WB	
Species Specificity: human, mouse	
Cited Species: human, mouse	
Note-IHC: suggested antigen retrieval with TE buffer pH 9.0; (*) Alternatively, antigen retrieval may be performed with citrate buffer pH 6.0	

Background Information

Human SCO2 is a mitochondrial membrane-bound protein involved in copper supply for the assembly of cytochrome c oxidase in eukaryotes. It is involved in the maintenance of cell copper homeostasis or, limited to HSCO2, as a downstream mediator of the Warburg effect, as its expression is regulated by p53 (PMID:17850752). This protein belongs to the SCO1/2 family and defects in SCO2 are the cause of fatal infantile cardioencephalomyopathy with cytochrome c oxidase deficiency (FIC).

Notable Publications

Author	Pubmed ID	Journal	Application
Fabao Liu	26309161	Oncotarget	WB,IHC
David Pacheu-Grau	25959673	Cell Metab	WB
Kunlun Yin	33723373	Cell Death Differ	WB

Storage

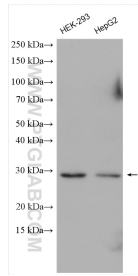
Storage:
Store at -20°C. Stable for one year after shipment.
Storage Buffer:
PBS with 0.02% sodium azide and 50% glycerol pH 7.3.
Aliquoting is unnecessary for -20°C storage

*** 20ul sizes contain 0.1% BSA

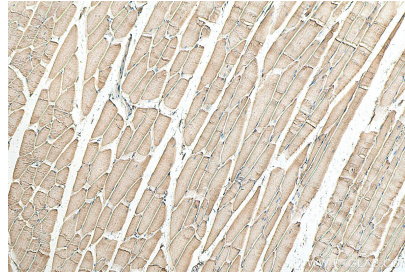
For technical support and original validation data for this product please contact:
T: 1 (888) 4PTGLAB (1-888-478-4522) (toll free in USA), or 1(312) 455-8498 (outside USA)
E: proteintech@ptglab.com
W: ptglab.com

This product is exclusively available under Proteintech Group brand and is not available to purchase from any other manufacturer.

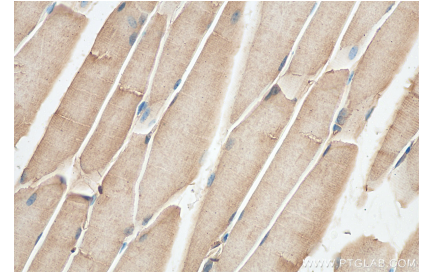
Selected Validation Data



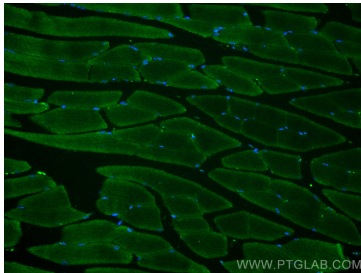
HEK-293 cells were subjected to SDS PAGE followed by western blot with 21223-1-AP (SCO2 antibody) at dilution of 1:1500 incubated at room temperature for 1.5 hours.



Immunohistochemical analysis of paraffin-embedded mouse skeletal muscle tissue slide using 21223-1-AP (SCO2 antibody) at dilution of 1:200 (under 10x lens). Heat mediated antigen retrieval with Tris-EDTA buffer (pH 9.0).



Immunohistochemical analysis of paraffin-embedded mouse skeletal muscle tissue slide using 21223-1-AP (SCO2 antibody) at dilution of 1:200 (under 40x lens). Heat mediated antigen retrieval with Tris-EDTA buffer (pH 9.0).



Immunofluorescent analysis of (4% PFA) fixed mouse skeletal muscle tissue using SCO2 antibody (21223-1-AP) at dilution of 1:200 and CoraLite®488-Conjugated AffiniPure Goat Anti-Rabbit IgG(H+L).