

For Research Use Only

SP6 Polyclonal antibody

Catalog Number: 21234-1-AP

1 Publications



Basic Information

Catalog Number:

21234-1-AP

Size:

150ul , Concentration: 220 µg/ml by Bradford method using BSA as the standard;

Source:

Rabbit

Isotype:

IgG

Immunogen Catalog Number:

AG15707

GenBank Accession Number:

BC103951

GeneID (NCBI):

80320

UNIPROT ID:

Q3SY56

Full Name:

Sp6 transcription factor

Calculated MW:

376 aa, 40 kDa

Purification Method:

Antigen affinity purification

Recommended Dilutions:

WB 1:200-1:1000

IHC 1:20-1:200

IF/ICC 1:50-1:500

Applications

Tested Applications:

WB, IF, IHC, ELISA

Cited Applications:

WB, IHC

Species Specificity:

human, mouse, rat

Cited Species:

human

Note-IHC: suggested antigen retrieval with TE buffer pH 9.0; (*) Alternatively, antigen retrieval may be performed with citrate buffer pH 6.0

Positive Controls:

WB : fetal human brain tissue, mouse brain tissue

IHC : human skin tissue, human placenta tissue

IF/ICC : Caco-2 cells,

Background Information

SP6 (chromosome 17) is a 376 amino acid protein, which localizes in nucleus. SP6 is a transcription factor of the SP/KLF family and an indispensable regulator of the morphological dynamics of ameloblast differentiation during tooth development. The levels of sp6 protein expressed in various tissues in the embryo. This antibody detects the SP6 protein. It can't detect the KLF14/BTEB5.

This antibody was previously listed as a KLF14 antibody, because the SP6 gene on chromosome 17q21.32 has been referred to as KLF14 in the literature. SP6 should not be confused with the KLF14 gene on chromosome 7q32.2.

Notable Publications

Author	Pubmed ID	Journal	Application
Guiyang Wu	30745849	Int J Biol Sci	WB,IHC

Storage

Storage:

Store at -20°C. Stable for one year after shipment.

Storage Buffer:

PBS with 0.02% sodium azide and 50% glycerol pH 7.3.

Aliquoting is unnecessary for -20°C storage

*** 20ul sizes contain 0.1% BSA

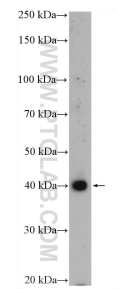
For technical support and original validation data for this product please contact:

T: 1 (888) 4PTGLAB (1-888-478-4522) (toll free in USA), or 1(312) 455-8498 (outside USA)

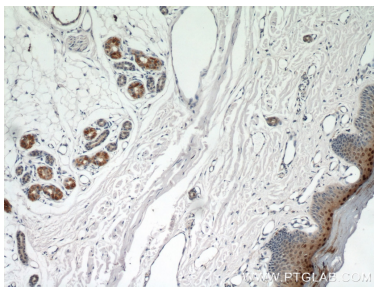
E: proteintech@ptglab.com
W: ptglab.com

This product is exclusively available under Proteintech Group brand and is not available to purchase from any other manufacturer.

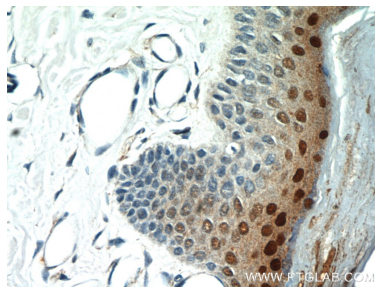
Selected Validation Data



fetal human brain tissue were subjected to SDS PAGE followed by western blot with 21234-1-AP (KLF14 antibody) at dilution of 1:300 incubated at room temperature for 1.5 hours.



Immunohistochemical analysis of paraffin-embedded human skin using 21234-1-AP (KLF14 antibody) at dilution of 1:100 (under 10x lens).



Immunohistochemical analysis of paraffin-embedded human skin using 21234-1-AP (KLF14 antibody) at dilution of 1:100 (under 40x lens).



Immunofluorescent analysis of (4% PFA) fixed Caco-2 cells using SP6 antibody (21234-1-AP) at dilution of 1:200 and CoraLite®488-Conjugated AffiniPure Goat Anti-Rabbit IgG(H+L).