

For Research Use Only

TXNDC6 Polyclonal antibody, PBS Only

Catalog Number: 21235-1-PBS



Basic Information

| | | |
|--|--|--|
| Catalog Number: 21235-1-PBS | GenBank Accession Number: BC107054 | Purification Method: Antigen affinity purification |
| Size: 100ug, Concentration: 1 mg/ml by Nanodrop; | GeneID (NCBI): 347736 | |
| Source: Rabbit | UNIPROT ID: Q86XW9 | |
| Isotype: IgG | Full Name: thioredoxin domain containing 6 | |
| Immunogen Catalog Number: AG15719 | Calculated MW: 263 aa, 30 kDa | |
| | Observed MW: 30 kDa | |

Applications

Tested Applications:
WB, Indirect ELISA

Species Specificity:
human

Background Information

Thioredoxin domain-containing protein 6 (TXNDC6), also known as NME/NM23 family member 9 (NME9) or thioredoxin-like protein 2 (TxL-2), belongs to the group II NME/NDK (nucleoside diphosphate kinase) family and is a member of the thioredoxin (Trx) superfamily. Although the precise physiological function of TXNDC6 remains unclear, current evidence suggests it may act as a regulator of microtubule physiology.

Storage

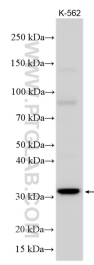
Storage:
Store at -80°C.

Storage Buffer:
PBS only, pH7.3

For technical support and original validation data for this product please contact:
T: 1 (888) 4PTGLAB (1-888-478-4522) (toll free in USA), or 1(312) 455-8498 (outside USA) E: proteintech@ptglab.com
W: ptglab.com

This product is exclusively available under Proteintech Group brand and is not available to purchase from any other manufacturer.

Selected Validation Data



K-562 cell lysates were subjected to SDS PAGE followed by western blot with 21235-1-AP (TXNDC6 antibody) at dilution of 1:800 incubated at room temperature for 1.5 hours. This data was developed using the same antibody clone with 21235-1-PBS in a different storage buffer formulation.