

For Research Use Only

# EPS15R Polyclonal antibody

Catalog Number: 21243-1-AP

2 Publications



## Basic Information

<b>Catalog Number:</b> 21243-1-AP	<b>GenBank Accession Number:</b> BC142716	<b>Purification Method:</b> Antigen affinity purification
<b>Size:</b> 150ul , Concentration: 1000 ug/ml by Nanodrop and 500 ug/ml by Bradford method using BSA as the standard;	<b>GeneID (NCBI):</b> 58513	<b>Recommended Dilutions:</b> WB 1:2000-1:14000
<b>Source:</b> Rabbit	<b>UNIPROT ID:</b> Q9UBC2	<b>IHC 1:50-1:500</b>
<b>Isotype:</b> IgG	<b>Full Name:</b> epidermal growth factor receptor pathway substrate 15-like 1	<b>IF/ICC 1:50-1:500</b>
<b>Immunogen Catalog Number:</b> AG15735	<b>Calculated MW:</b> 864 aa, 94 kDa	
	<b>Observed MW:</b> 94 kDa	

## Applications

<b>Tested Applications:</b> WB, IHC, IF/ICC, ELISA	<b>Positive Controls:</b>
<b>Cited Applications:</b> WB	<b>WB :</b> BxPC-3 cells, MCF-7 cells, HEK-293 cells, Y79 cells
<b>Species Specificity:</b> human	<b>IHC :</b> human intrahepatic cholangiocarcinoma tissue,
<b>Cited Species:</b> human, pig	<b>IF/ICC :</b> BxPC-3 cells,
<b>Note-IHC: suggested antigen retrieval with TE buffer pH 9.0; (*) Alternatively, antigen retrieval may be performed with citrate buffer pH 6.0</b>	

## Background Information

EPS15R is a protein that belongs to the Eps15 family of proteins, which are known for their roles in intracellular trafficking, particularly in the regulation of endocytosis and vesicle formation. EPS15R, like other members of the Eps15 family, functions as a scaffolding adaptor protein and is involved in both secretion and endocytosis. It has been shown to bind to AP-1 and AP-2 complexes, inositol lipids, and several other proteins that are crucial for the regulation of intracellular trafficking. EPS15R is also implicated in the regulation of membrane morphology, which is essential for intracellular vesicle formation and trafficking. It has been detected in the nucleus of mammalian cells, and its activation through growth factor receptors induces tyrosine phosphorylation and mono-ubiquitination, although the specific roles of these post-translational modifications are not yet fully understood.

## Notable Publications

Author	Pubmed ID	Journal	Application
Xiaofei Zhang	28190767	Mol Cell	WB
Xin Chen	37254454	Emerg Microbes Infect	WB

## Storage

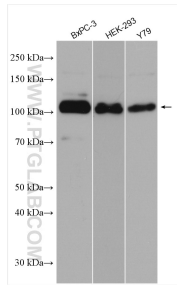
**Storage:**  
Store at -20°C. Stable for one year after shipment.  
**Storage Buffer:**  
PBS with 0.02% sodium azide and 50% glycerol pH 7.3.  
**Aliquoting is unnecessary for -20°C storage**

\*\*\* 20ul sizes contain 0.1% BSA

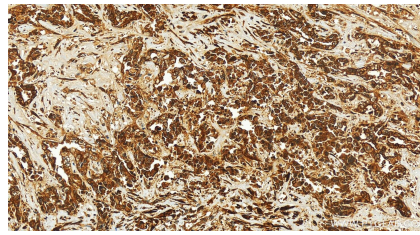
For technical support and original validation data for this product please contact:  
T: 1 (888) 4PTGLAB (1-888-478-4522) (toll free in USA), or 1(312) 455-8498 (outside USA)  
E: proteintech@ptglab.com  
W: ptglab.com

This product is exclusively available under Proteintech Group brand and is not available to purchase from any other manufacturer.

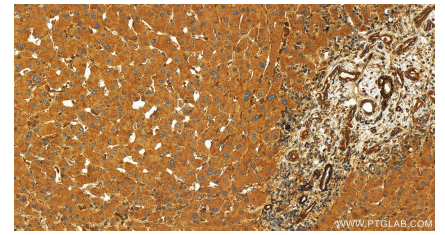
## Selected Validation Data



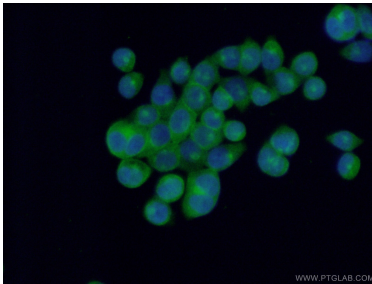
Various lysates were subjected to SDS PAGE followed by western blot with 21243-1-AP (EPS15R antibody) at dilution of 1:7000 incubated at room temperature for 1.5 hours.



Immunohistochemical analysis of paraffin-embedded human intrahepatic cholangiocarcinoma tissue slide using 21243-1-AP (EPS15R antibody) at dilution of 1:200 (under 20x lens). Heat mediated antigen retrieval with Tris-EDTA buffer (pH 9.0).



Immunohistochemical analysis of paraffin-embedded human intrahepatic cholangiocarcinoma tissue slide using 21243-1-AP (EPS15R antibody) at dilution of 1:200 (under 20x lens). Heat mediated antigen retrieval with Tris-EDTA buffer (pH 9.0).



Immunofluorescent analysis of (4% PFA) fixed BxPC-3 cells using 21243-1-AP (EPS15R antibody) at dilution of 1:50 and Alexa Fluor 488-conjugated AffiniPure Goat Anti-Rabbit IgG(H+L).